

Stat4 (phospho Tyr693) rabbit pAb**Cat#: orb764282 (Manual)**

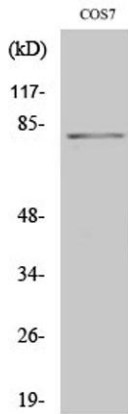
For research use only. Not intended for diagnostic use.

Product Name	Stat4 (phospho Tyr693) rabbit pAb
Host species	Rabbit
Applications	WB;IHC;IF;IP;ELISA
Species Cross-Reactivity	Human;Mouse;Rat;Monkey
Recommended dilutions	Western Blot: 1/500 - 1/2000. Immunohistochemistry: 1/100 - 1/300. Immunoprecipitation: 2-5 ug/mg lysate. ELISA: 1/5000. Not yet tested in other applications.
Immunogen	The antiserum was produced against synthesized peptide derived from human STAT4 around the phosphorylation site of Tyr693. AA range:660-709
Specificity	Phospho-Stat4 (Y693) Polyclonal Antibody detects endogenous levels of Stat4 protein only when phosphorylated at Y693.
Formulation	Liquid in PBS containing 50% glycerol, 0.5% BSA and 0.02% sodium azide..
Storage	Store at -20°C. Avoid repeated freeze-thaw cycles.
Protein Name	Signal transducer and activator of transcription 4
Gene Name	STAT4
Cellular localization	Cytoplasm. Nucleus. Translocated into the nucleus in response to phosphorylation.
Purification	The antibody was affinity-purified from rabbit antiserum by affinity-chromatography using epitope-specific immunogen.
Clonality	Polyclonal

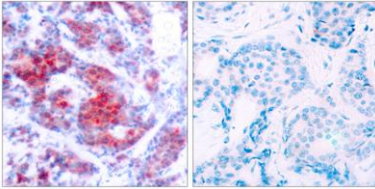
Concentration	1 mg/ml
Observed band	86kD
Human Gene ID	6775
Human Swiss-Prot Number	Q14765
Alternative Names	STAT4; Signal transducer and activator of transcription 4

Background

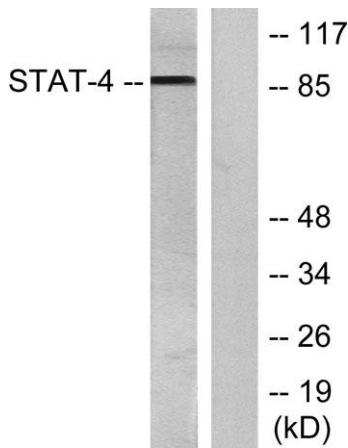
The protein encoded by this gene is a member of the STAT family of transcription factors. In response to cytokines and growth factors, STAT family members are phosphorylated by the receptor associated kinases, and then form homo- or heterodimers that translocate to the cell nucleus where they act as transcription activators. This protein is essential for mediating responses to IL12 in lymphocytes, and regulating the differentiation of T helper cells. Mutations in this gene may be associated with systemic lupus erythematosus and rheumatoid arthritis. Alternate splicing results in multiple transcript variants that encode the same protein. [provided by RefSeq, Aug 2011],



Western Blot analysis of various cells using Phospho-Stat4 (Y693) Polyclonal Antibody diluted at 1:2000



Immunohistochemistry analysis of paraffin-embedded human breast carcinoma, using STAT4 (Phospho-Tyr693) Antibody. The picture on the right is blocked with the phospho peptide.



Western blot analysis of lysates from HeLa cells treated with IL-4, using STAT4 (Phospho-Tyr693) Antibody. The lane on the right is blocked with the phospho peptide.