

Stat1 (phospho Tyr701) rabbit pAb**Cat#: orb764279 (Manual)**

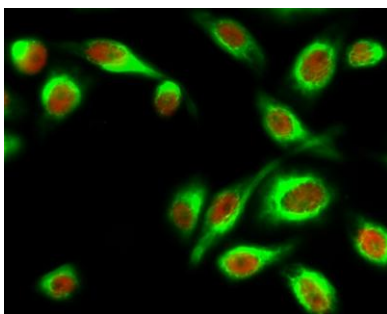
For research use only. Not intended for diagnostic use.

Product Name	Stat1 (phospho Tyr701) rabbit pAb
Host species	Rabbit
Applications	IF;WB;IHC;IP;ELISA
Species Cross-Reactivity	Human;Mouse;Rat;Monkey
Recommended dilutions	IF: 1:50-200 Western Blot: 1/500 - 1/2000. Immunohistochemistry: 1/100 - 1/300. Immunoprecipitation: 2-5 ug/mg lysate. ELISA: 1/10000. Not yet tested in other applications.
Immunogen	The antiserum was produced against synthesized peptide derived from human STAT1 around the phosphorylation site of Tyr701. AA range:668-717
Specificity	Phospho-Stat1 (Y701) Polyclonal Antibody detects endogenous levels of Stat1 protein only when phosphorylated at Y701.
Formulation	Liquid in PBS containing 50% glycerol, 0.5% BSA and 0.02% sodium azide..
Storage	Store at -20°C. Avoid repeated freeze-thaw cycles.
Protein Name	Signal transducer and activator of transcription 1-alpha/beta
Gene Name	STAT1
Cellular localization	Cytoplasm . Nucleus . Translocated into the nucleus upon tyrosine phosphorylation and dimerization, in response to IFN-gamma and signaling by activated FGFR1, FGFR2, FGFR3 or FGFR4 (PubMed:15322115). Monomethylation at Lys-525 is required for phosphorylation at Tyr-701 and translocation into the nucleus (PubMed:28753426). Translocates into the nucleus in response to interferon-beta stimulation (PubMed:26479788). .

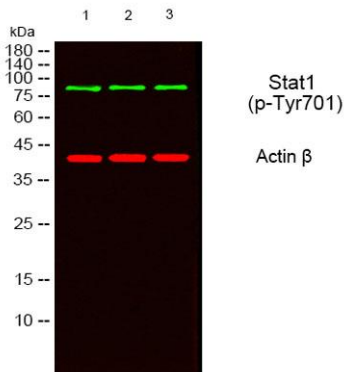
Purification	The antibody was affinity-purified from rabbit antiserum by affinity-chromatography using epitope-specific immunogen.
Clonality	Polyclonal
Concentration	1 mg/ml
Observed band	87kD
Human Gene ID	6772
Human Swiss-Prot Number	P42224
Alternative Names	STAT1; Signal transducer and activator of transcription 1-alpha/beta; Transcription factor ISGF-3 components p91/p84

Background

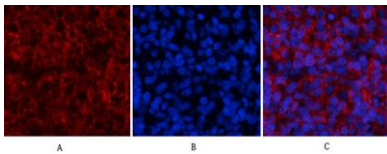
The protein encoded by this gene is a member of the STAT protein family. In response to cytokines and growth factors, STAT family members are phosphorylated by the receptor associated kinases, and then form homo- or heterodimers that translocate to the cell nucleus where they act as transcription activators. This protein can be activated by various ligands including interferon-alpha, interferon-gamma, EGF, PDGF and IL6. This protein mediates the expression of a variety of genes, which is thought to be important for cell viability in response to different cell stimuli and pathogens. Two alternatively spliced transcript variants encoding distinct isoforms have been described. [provided by RefSeq, Jul 2008],



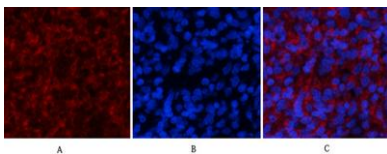
Immunofluorescence analysis of HeLa cell. 1, Stat1 (phospho Tyr701) Polyclonal Antibody (red) was diluted at 1:200 (4° overnight). HER2 Monoclonal Antibody (11H9) (green) was diluted at 1:200 (4° overnight). 2, Goat Anti Rabbit Alexa Fluor 594 Catalog:RS3611 was diluted at 1:1000 (room temperature, 50min). Goat Anti Mouse Alexa Fluor 488 Catalog:RS3208 was diluted at 1:1000 (room temperature, 50min).



Western blot analysis of lysates from 1) MOUSE-BRAIN, 2) SY-SY5X, 3) COS7 cells, (Green) primary antibody was diluted at 1:1000, 4° over night, secondary antibody(cat:RS23920)was diluted at 1:10000, 37° 1hour. (Red) Actin β Monoclonal Antibody(5B7) (cat:YM3028) antibody was diluted at 1:5000 as loading control, 4° over night,secondary antibody(cat:RS23710)was diluted at 1:10000, 37° 1hour.



Immunofluorescence analysis of rat-spleen tissue. 1,Stat1 (phospho Tyr701) Polyclonal Antibody(red) was diluted at 1:200(4°C,overnight). 2, Cy3 labeled Secondary antibody was diluted at 1:300(room temperature, 50min).3, Picture B: DAPI(blue) 10min. Picture A:Target. Picture B: DAPI. Picture C: merge of A+B



Immunofluorescence analysis of rat-spleen tissue. 1,Stat1 (phospho Tyr701) Polyclonal Antibody(red) was diluted at 1:200(4°C,overnight). 2, Cy3 labeled Secondary antibody was diluted at 1:300(room temperature, 50min).3, Picture B: DAPI(blue) 10min. Picture A:Target. Picture B: DAPI. Picture C: merge of A+B