

**Shb (phospho Tyr246) rabbit pAb****Cat#: orb764277 (Manual)**

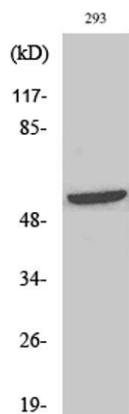
For research use only. Not intended for diagnostic use.

<b>Product Name</b>	Shb (phospho Tyr246) rabbit pAb
<b>Host species</b>	Rabbit
<b>Applications</b>	WB;IHC
<b>Species Cross-Reactivity</b>	Human;Mouse
<b>Recommended dilutions</b>	WB 1:500-2000;IHC-p 1:50-300
<b>Immunogen</b>	Synthesized phospho-peptide around the phosphorylation site of human Shb (phospho Tyr246)
<b>Specificity</b>	Phospho-Shb (Y246) Polyclonal Antibody detects endogenous levels of Shb protein only when phosphorylated at Y246.
<b>Formulation</b>	Liquid in PBS containing 50% glycerol, 0.5% BSA and 0.02% sodium azide..
<b>Storage</b>	Store at -20°C. Avoid repeated freeze-thaw cycles.
<b>Protein Name</b>	SH2 domain-containing adapter protein B
<b>Gene Name</b>	SHB
<b>Cellular localization</b>	Cytoplasm. Cell membrane; Peripheral membrane protein; Cytoplasmic side. Associates with membrane lipid rafts upon TCR stimulation.
<b>Purification</b>	The antibody was affinity-purified from rabbit antiserum by affinity-chromatography using epitope-specific immunogen.
<b>Clonality</b>	Polyclonal

<b>Concentration</b>	1 mg/ml
<b>Observed band</b>	55kD
<b>Human Gene ID</b>	6461
<b>Human Swiss-Prot Number</b>	Q15464
<b>Alternative Names</b>	SHB; SH2 domain-containing adapter protein B

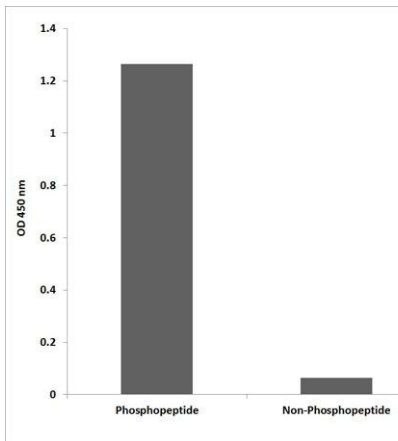
### Background

**domain:**The SH2 domain preferentially binds phosphopeptides with the consensus sequence Y-[TVI]-X-L and mediates interaction with PDGFRA, PDGFRB, FGFR1, IL2RB, IL2RG, CD3Z and CRK/CrKII.  
**function:**Adapter protein which regulates several signal transduction cascades by linking activated receptors to downstream signaling components. May play a role in angiogenesis by regulating FGFR1, VEGFR2 and PDGFR signaling. May also play a role in T-cell antigen receptor/TCR signaling, interleukin-2 signaling, apoptosis and neuronal cells differentiation by mediating basic-FGF and NGF-induced signaling cascades. May also regulate IRS1 and IRS2 signaling in insulin-producing cells.  
**PTM:**Phosphorylated upon PDGFRA, PDGFRB, TCR, IL2 receptor, FGFR1 or VEGFR2 activation.  
**similarity:**Contains 1 SH2 domain.  
**subcellular location:**Associates with membrane lipid rafts upon TCR stimulation.  
**subunit:**Interacts with PTPN11 (By similarity). Interacts with phosphorylated 'Tyr-720' of the ligand-activated receptor PDGFRA via its SH2 domain. Interacts with the ligand-activated receptors PDGFRB, FGFR1, KDR/VEGFR2, IL2RB and IL2RG. Interacts with EPS8 and V-SRC. Interacts with GRB2 and GRAP. Interacts with CD3Z. Interacts with tyrosine-phosphorylated LAT upon T-cell antigen receptor activation. Interacts with PLCG1. Interacts with ZAP70, LCP2/SLP-76, VAV1 and GRAP2. Interacts with JAK1 and JAK3. Interacts with PTK2/FAK1. Interacts with CRK/CrKII. Interacts with IRS2.  
**tissue specificity:**Widely expressed.

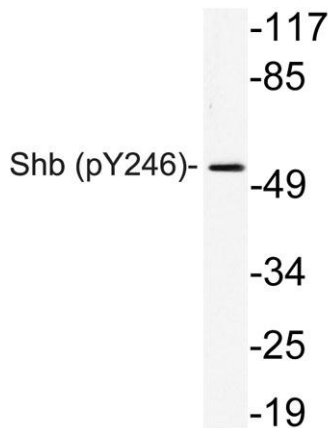


**Western Blot analysis of various cells using Phospho-Shb (Y246) Polyclonal Antibody**

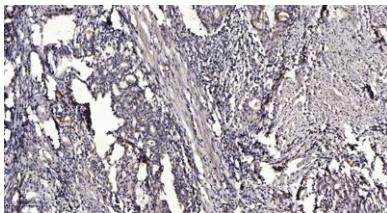
Explore. Bioreagents.



Enzyme-Linked Immunosorbent Assay (Phospho-ELISA) for Immunogen Phosphopeptide (Phospho-left) and Non-Phosphopeptide (Phospho-right), using Shb (Phospho-Tyr246) Antibody



Western blot analysis of lysate from 293 cells, using phospho-Serhb (Phospho-Tyr246) antibody.



Immunohistochemical analysis of paraffin-embedded human Gastric adenocarcinoma. 1, Antibody was diluted at 1:200(4° overnight). 2, Tris-EDTA,pH9.0 was used for antigen retrieval. 3,Secondary antibody was diluted at 1:200(room temperature, 45min).