

Op18 (phospho Ser25) rabbit pAb**Cat#: orb764250 (Manual)**

For research use only. Not intended for diagnostic use.

Product Name	Op18 (phospho Ser25) rabbit pAb
Host species	Rabbit
Applications	WB;IHC;IF;ELISA
Species Cross-Reactivity	Human;Mouse;Rat
Recommended dilutions	Western Blot: 1/500 - 1/2000. Immunohistochemistry: 1/100 - 1/300. ELISA: 1/10000. Not yet tested in other applications.
Immunogen	The antiserum was produced against synthesized peptide derived from human Stathmin 1 around the phosphorylation site of Ser24. AA range:9-58
Specificity	Phospho-Op18 (S25) Polyclonal Antibody detects endogenous levels of Op18 protein only when phosphorylated at S25.
Formulation	Liquid in PBS containing 50% glycerol, 0.5% BSA and 0.02% sodium azide..
Storage	Store at -20°C. Avoid repeated freeze-thaw cycles.
Protein Name	Stathmin
Gene Name	STMN1
Cellular localization	Cytoplasm, cytoskeleton.
Purification	The antibody was affinity-purified from rabbit antiserum by affinity-chromatography using epitope-specific immunogen.
Clonality	Polyclonal

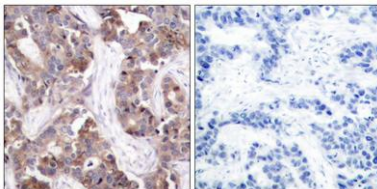
Concentration	1 mg/ml
Observed band	19kD
Human Gene ID	3925
Human Swiss-Prot Number	P16949
Alternative Names	STMN1; C1orf215; LAP18; OP18; Stathmin; Leukemia-associated phosphoprotein p18; Metablastin; Oncoprotein 18; Op18; Phosphoprotein p19; pp19; Prosolin; Protein Pr22; pp17

Background

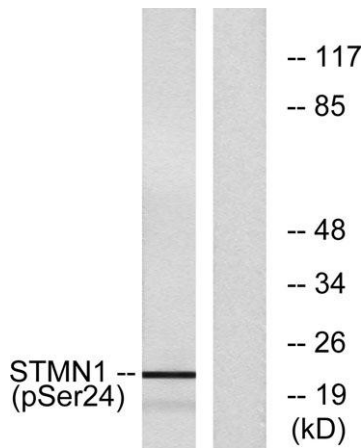
This gene belongs to the stathmin family of genes. It encodes a ubiquitous cytosolic phosphoprotein proposed to function as an intracellular relay integrating regulatory signals of the cellular environment. The encoded protein is involved in the regulation of the microtubule filament system by destabilizing microtubules. It prevents assembly and promotes disassembly of microtubules. Multiple transcript variants encoding different isoforms have been found for this gene. [provided by RefSeq, Feb 2009],



Western Blot analysis of various cells using Phospho-Op18 (S25) Polyclonal Antibody



Immunohistochemistry analysis of paraffin-embedded human breast carcinoma, using Stathmin 1 (Phospho-Ser24) Antibody. The picture on the right is blocked with the phospho peptide.



Western blot analysis of lysates from Jurkat cells treated with PMA 1ng/ml 15', using Stathmin 1 (Phospho-Ser24) Antibody. The lane on the right is blocked with the phospho peptide.