

Jun B (phospho Ser259) rabbit pAb**Cat#: orb764226 (Manual)**

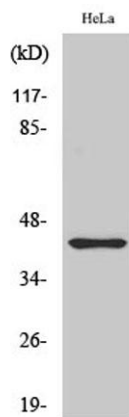
For research use only. Not intended for diagnostic use.

Product Name	Jun B (phospho Ser259) rabbit pAb
Host species	Rabbit
Applications	WB;IHC;IF;IP;ELISA
Species Cross-Reactivity	Human;Mouse;Rat
Recommended dilutions	Western Blot: 1/500 - 1/2000. Immunohistochemistry: 1/100 - 1/300. Immunoprecipitation: 2-5 ug/mg lysate. ELISA: 1/20000. Not yet tested in other applications.
Immunogen	The antiserum was produced against synthesized peptide derived from human JunB around the phosphorylation site of Ser259. AA range:226-275
Specificity	Phospho-Jun B (S259) Polyclonal Antibody detects endogenous levels of Jun B protein only when phosphorylated at S259.
Formulation	Liquid in PBS containing 50% glycerol, 0.5% BSA and 0.02% sodium azide..
Storage	Store at -20°C. Avoid repeated freeze-thaw cycles.
Protein Name	Transcription factor jun-B
Gene Name	JUNB
Cellular localization	Nucleus.
Purification	The antibody was affinity-purified from rabbit antiserum by affinity-chromatography using epitope-specific immunogen.
Clonality	Polyclonal

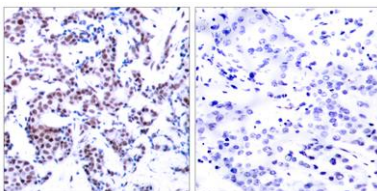
Concentration	1 mg/ml
Observed band	33kD
Human Gene ID	3726
Human Swiss-Prot Number	P17275
Alternative Names	JUNB; Transcription factor jun-B

Background

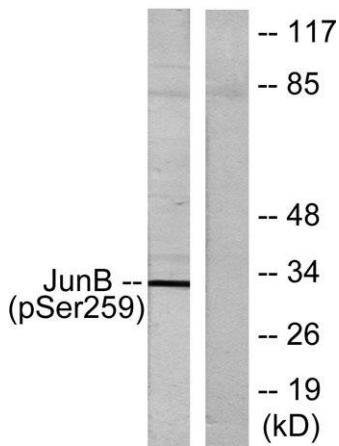
function:Transcription factor involved in regulating gene activity following the primary growth factor response. Binds to the DNA sequence 5'-TGA[CG]TCA-3'.,induction:By growth factors.,similarity:Belongs to the bZIP family.,similarity:Belongs to the bZIP family. Jun subfamily.,similarity:Contains 1 bZIP domain.,subunit:Binds DNA as an homodimer or as an heterodimer with another member of the jun/fos family.,



Western Blot analysis of various cells using Phospho-Jun B (S259) Polyclonal Antibody cells nucleus extracted by Minute TM Cytoplasmic and Nuclear Fractionation kit (SC-003, Invent biotech, MN, USA).



Immunohistochemistry analysis of paraffin-embedded human breast carcinoma, using JunB (Phospho-Ser259) Antibody. The picture on the right is blocked with the phospho peptide.



Western blot analysis of lysates from HeLa cells, using JunB (Phospho-Ser259) Antibody. The lane on the right is blocked with the phospho peptide.