

**IRS-1 (phospho Ser1101) rabbit pAb****Cat#: orb764214 (Manual)**

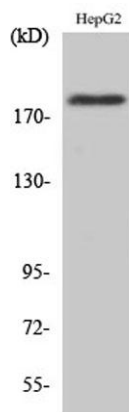
For research use only. Not intended for diagnostic use.

|                                 |  |
|---------------------------------|--|
| <b>Product Name</b>             | IRS-1 (phospho Ser1101) rabbit pAb   |
| <b>Host species</b>             | Rabbit   |
| <b>Applications</b>             | WB;IHC;IF;ELISA  |
| <b>Species Cross-Reactivity</b> | Human;Mouse;Rat;Monkey   |
| <b>Recommended dilutions</b>    | Western Blot: 1/500 - 1/2000. Immunohistochemistry: 1/100 - 1/300. ELISA: 1/20000. Not yet tested in other applications.                       |
| <b>Immunogen</b>                | The antiserum was produced against synthesized peptide derived from human IRS-1 around the phosphorylation site of Ser1101. AA range:1067-1116 |
| <b>Specificity</b>              | Phospho-IRS-1 (S1101) Polyclonal Antibody detects endogenous levels of IRS-1 protein only when phosphorylated at S1101.                        |
| <b>Formulation</b>              | Liquid in PBS containing 50% glycerol, 0.5% BSA and 0.02% sodium azide..   |
| <b>Storage</b>                  | Store at -20°C. Avoid repeated freeze-thaw cycles.   |
| <b>Protein Name</b>             | Insulin receptor substrate 1   |
| <b>Gene Name</b>                | IRS1   |
| <b>Cellular localization</b>    | nucleus,cytoplasm,cytosol,plasma membrane,insulin receptor complex,caveola,intracellular membrane-bounded organelle,                           |
| <b>Purification</b>             | The antibody was affinity-purified from rabbit antiserum by affinity-chromatography using epitope-specific immunogen.                          |
| <b>Clonality</b>                | Polyclonal   |

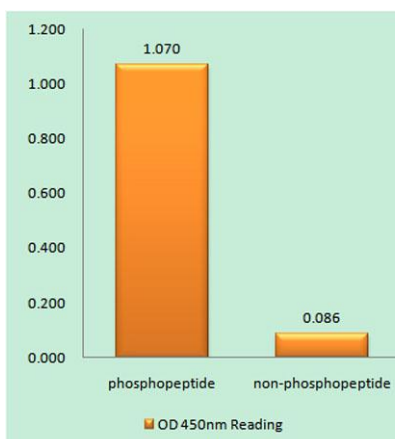
|                                |   |
|--------------------------------|---|
| <b>Concentration</b>           | 1 mg/ml                                   |
| <b>Observed band</b>           | 170kD                                     |
| <b>Human Gene ID</b>           | 3667                                      |
| <b>Human Swiss-Prot Number</b> | P35568                                    |
| <b>Alternative Names</b>       | IRS1; Insulin receptor substrate 1; IRS-1 |

## Background

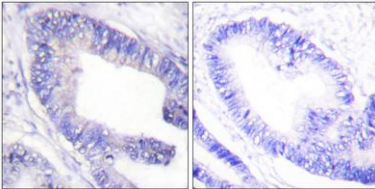
This gene encodes a protein which is phosphorylated by insulin receptor tyrosine kinase. Mutations in this gene are associated with type II diabetes and susceptibility to insulin resistance. [provided by RefSeq, Nov 2009],



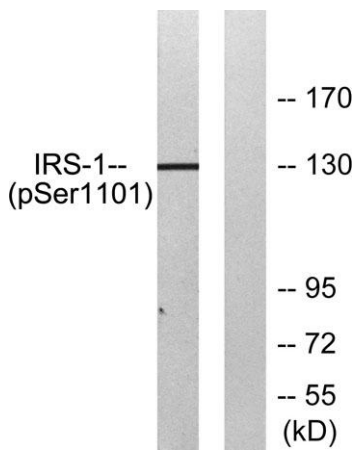
Western Blot analysis of various cells using Phospho-IRS-1 (S1101) Polyclonal Antibody diluted at 1:500



Enzyme-Linked Immunosorbent Assay (Phospho-ELISA) for Immunogen Phosphopeptide (Phospho-left) and Non-Phosphopeptide (Phospho-right), using IRS-1 (Phospho-Ser1101) Antibody



**Immunohistochemistry analysis of paraffin-embedded human colon carcinoma, using IRS-1 (Phospho-Ser1101) Antibody. The picture on the right is blocked with the phospho peptide.**



**Western blot analysis of lysates from COS7 cells treated with Calyculin A 50ng/ml 30', using IRS-1 (Phospho-Ser1101) Antibody. The lane on the right is blocked with the phospho peptide.**