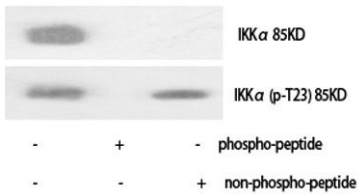


IKK α (phospho Thr23) rabbit pAb**Cat#: orb764211 (Manual)**

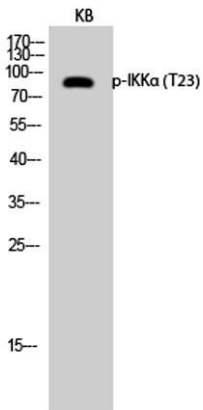
For research use only. Not intended for diagnostic use.

Product Name	IKK α (phospho Thr23) rabbit pAb
Host species	Rabbit
Applications	WB;IHC;IF;ELISA
Species Cross-Reactivity	Human;Mouse;Rat
Recommended dilutions	Western Blot: 1/500 - 1/2000. Immunohistochemistry: 1/100 - 1/300. ELISA: 1/5000. Not yet tested in other applications.
Immunogen	The antiserum was produced against synthesized peptide derived from human IKK-alpha around the phosphorylation site of Thr23. AA range:15-64
Specificity	Phospho-IKK α (T23) Polyclonal Antibody detects endogenous levels of IKK α protein only when phosphorylated at T23.
Formulation	Liquid in PBS containing 50% glycerol, 0.5% BSA and 0.02% sodium azide..
Storage	Store at -20°C. Avoid repeated freeze-thaw cycles.
Protein Name	Inhibitor of nuclear factor kappa-B kinase subunit alpha
Gene Name	CHUK
Cellular localization	Cytoplasm . Nucleus . Shuttles between the cytoplasm and the nucleus.
Purification	The antibody was affinity-purified from rabbit antiserum by affinity-chromatography using epitope-specific immunogen.
Clonality	Polyclonal

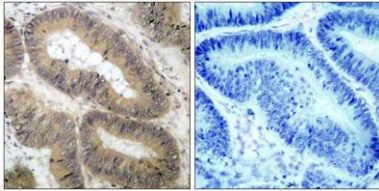
Concentration	1 mg/ml
Observed band	
Human Gene ID	1147
Human Swiss-Prot Number	O15111
Alternative Names	CHUK; IKKA; TCF16; Inhibitor of nuclear factor kappa-B kinase subunit alpha; I-kappa-B kinase alpha; IKK-A; IKK-alpha; IkbKA; IkappaB kinase; Conserved helix-loop-helix ubiquitous kinase; I-kappa-B kinase 1; IKK1; Nuclear factor NF-kappa-B
Background	This gene encodes a member of the serine/threonine protein kinase family. The encoded protein, a component of a cytokine-activated protein complex that is an inhibitor of the essential transcription factor NF-kappa-B complex, phosphorylates sites that trigger the degradation of the inhibitor via the ubiquination pathway, thereby activating the transcription factor. [provided by RefSeq, Jul 2008],



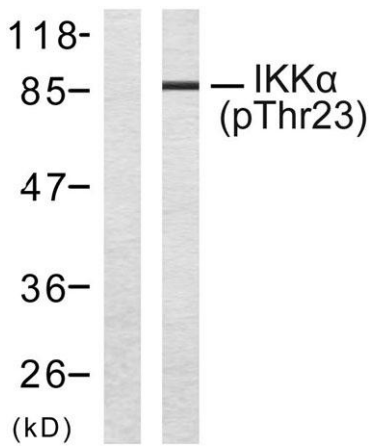
Western Blot analysis of various cells using Phospho-IKKα (T23) Polyclonal Antibody diluted at 1:1000



Western Blot analysis of KB cells using Phospho-IKKα (T23) Polyclonal Antibody diluted at 1:1000



Immunohistochemistry analysis of paraffin-embedded human colon carcinoma, using IKK-alpha (Phospho-Thr23) Antibody. The picture on the right is blocked with the phospho peptide.



Western blot analysis of lysates from MDA-MB-435 cells treated with EGF, using IKK-alpha (Phospho-Thr23) Antibody. The lane on the left is blocked with the phospho peptide.