

**IGF-IR (phospho Tyr1165/Y1166) rabbit pAb****Cat#: orb764210 (Manual)**

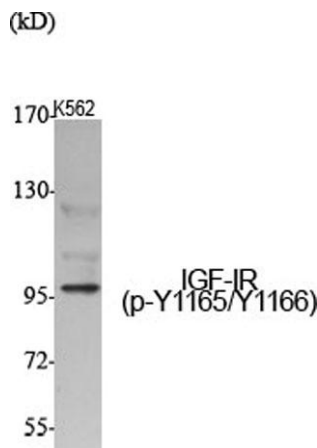
For research use only. Not intended for diagnostic use.

<b>Product Name</b>	IGF-IR (phospho Tyr1165/Y1166) rabbit pAb
<b>Host species</b>	Rabbit
<b>Applications</b>	WB;ELISA
<b>Species Cross-Reactivity</b>	Human;Mouse;Rat;Monkey
<b>Recommended dilutions</b>	Western Blot: 1/500 - 1/2000. ELISA: 1/20000. Not yet tested in other applications.
<b>Immunogen</b>	The antiserum was produced against synthesized peptide derived from human IGF1R around the phosphorylation site of Tyr1165/Tyr1166. AA range:1131-1180
<b>Specificity</b>	Phospho-IGF-IR (Y1165/Y1166) Polyclonal Antibody detects endogenous levels of IGF-IR protein only when phosphorylated at Y1165/Y1166.
<b>Formulation</b>	Liquid in PBS containing 50% glycerol, 0.5% BSA and 0.02% sodium azide..
<b>Storage</b>	Store at -20°C. Avoid repeated freeze-thaw cycles.
<b>Protein Name</b>	Insulin-like growth factor 1 receptor
<b>Gene Name</b>	IGF1R
<b>Cellular localization</b>	Cell membrane ; Single-pass type I membrane protein .
<b>Purification</b>	The antibody was affinity-purified from rabbit antiserum by affinity-chromatography using epitope-specific immunogen.
<b>Clonality</b>	Polyclonal

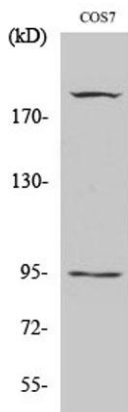
<b>Concentration</b>	1 mg/ml
<b>Observed band</b>	pro: 155kD, recetor beta: 95kD
<b>Human Gene ID</b>	3480
<b>Human Swiss-Prot Number</b>	P08069
<b>Alternative Names</b>	IGF1R; Insulin-like growth factor 1 receptor; Insulin-like growth factor I receptor; IGF-I receptor; CD antigen CD221

**Background**

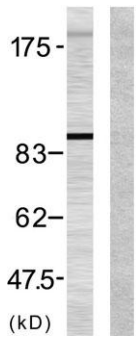
This receptor binds insulin-like growth factor with a high affinity. It has tyrosine kinase activity. The insulin-like growth factor I receptor plays a critical role in transformation events. Cleavage of the precursor generates alpha and beta subunits. It is highly overexpressed in most malignant tissues where it functions as an anti-apoptotic agent by enhancing cell survival. Alternatively spliced transcript variants encoding distinct isoforms have been found for this gene. [provided by RefSeq, May 2014].



**Western Blot analysis of various cells using Phospho-IGF-IR (Y1165/Y1166) Polyclonal Antibody diluted at 1:500**



**Western Blot analysis of COS7 cells using Phospho-IGF-IR (Y1165/Y1166) Polyclonal Antibody diluted at 1:500**



— IGF-1R  
(pTyr1165/Tyr1166)

**Western blot analysis of lysates from 293 cells treated with Insulin, using IGF1R (Phospho-Tyr1165/Tyr1166) Antibody. The lane on the right is blocked with the phospho peptide.**