

HSP27 (phospho Ser15) rabbit pAb**Cat#: orb764205 (Manual)**

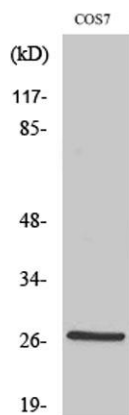
For research use only. Not intended for diagnostic use.

Product Name	HSP27 (phospho Ser15) rabbit pAb
Host species	Rabbit
Applications	WB;IHC;IF;ELISA
Species Cross-Reactivity	Human;Monkey
Recommended dilutions	Western Blot: 1/500 - 1/2000. Immunohistochemistry: 1/100 - 1/300. ELISA: 1/20000. Not yet tested in other applications.
Immunogen	The antiserum was produced against synthesized peptide derived from human HSP27 around the phosphorylation site of Ser15. AA range:5-54
Specificity	Phospho-HSP27 (S15) Polyclonal Antibody detects endogenous levels of HSP27 protein only when phosphorylated at S15.
Formulation	Liquid in PBS containing 50% glycerol, 0.5% BSA and 0.02% sodium azide..
Storage	Store at -20°C. Avoid repeated freeze-thaw cycles.
Protein Name	Heat shock protein beta-1
Gene Name	HSPB1
Cellular localization	Cytoplasm . Nucleus . Cytoplasm, cytoskeleton, spindle . Cytoplasmic in interphase cells. Colocalizes with mitotic spindles in mitotic cells. Translocates to the nucleus during heat shock and resides in sub-nuclear structures known as SC35 speckles or nuclear splicing speckles. .
Purification	The antibody was affinity-purified from rabbit antiserum by affinity-chromatography using epitope-specific immunogen.

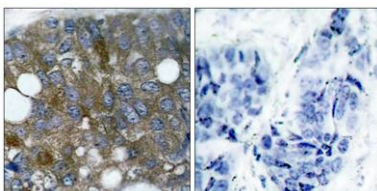
Clonality	Polyclonal
Concentration	1 mg/ml
Observed band	26kD
Human Gene ID	3315
Human Swiss-Prot Number	P04792
Alternative Names	HSPB1; HSP27; HSP28; Heat shock protein beta-1; HspB1; 28 kDa heat shock protein; Estrogen-regulated 24 kDa protein; Heat shock 27 kDa protein; HSP 27; Stress-responsive protein 27; SRP27

Background

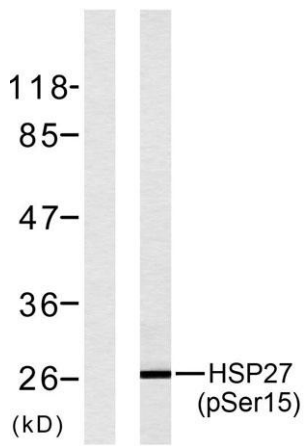
The protein encoded by this gene is induced by environmental stress and developmental changes. The encoded protein is involved in stress resistance and actin organization and translocates from the cytoplasm to the nucleus upon stress induction. Defects in this gene are a cause of Charcot-Marie-Tooth disease type 2F (CMT2F) and distal hereditary motor neuropathy (dHMN). [provided by RefSeq, Oct 2008],



Western Blot analysis of various cells using Phospho-HSP27 (S15) Polyclonal Antibody



Immunohistochemistry analysis of paraffin-embedded human breast carcinoma, using HSP27 (Phospho-Ser15) Antibody. The picture on the right is blocked with the phospho peptide.



Western blot analysis of lysates from HeLa cells treated with UV, using HSP27 (Phospho-Ser15) Antibody. The lane on the left is blocked with the phospho peptide.