

**GSK3 $\alpha$  (phospho Ser21) rabbit pAb****Cat#: orb764195 (Manual)**

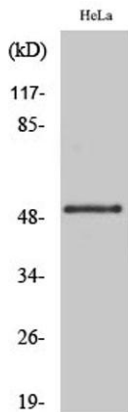
For research use only. Not intended for diagnostic use.

<b>Product Name</b>	GSK3 $\alpha$ (phospho Ser21) rabbit pAb
<b>Host species</b>	Rabbit
<b>Applications</b>	WB;IHC;IF;IP;ELISA
<b>Species Cross-Reactivity</b>	Human;Mouse;Rat
<b>Recommended dilutions</b>	Western Blot: 1/500 - 1/2000. Immunohistochemistry: 1/100 - 1/300. Immunoprecipitation: 2-5 ug/mg lysate. ELISA: 1/20000. Not yet tested in other applications.
<b>Immunogen</b>	The antiserum was produced against synthesized peptide derived from human GSK3 alpha around the phosphorylation site of Ser21. AA range:10-59
<b>Specificity</b>	Phospho-GSK3 $\alpha$ (S21) Polyclonal Antibody detects endogenous levels of GSK3 $\alpha$ protein only when phosphorylated at S21.
<b>Formulation</b>	Liquid in PBS containing 50% glycerol, 0.5% BSA and 0.02% sodium azide..
<b>Storage</b>	Store at -20°C. Avoid repeated freeze-thaw cycles.
<b>Protein Name</b>	Glycogen synthase kinase-3 alpha
<b>Gene Name</b>	GSK3A
<b>Cellular localization</b>	mitochondrion,cytosol,beta-catenin destruction complex,postsynapse,
<b>Purification</b>	The antibody was affinity-purified from rabbit antiserum by affinity-chromatography using epitope-specific immunogen.
<b>Clonality</b>	Polyclonal

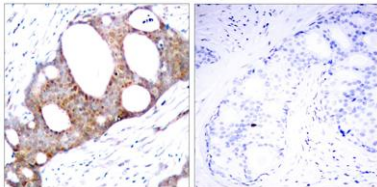
<b>Concentration</b>	1 mg/ml
<b>Observed band</b>	55kD
<b>Human Gene ID</b>	2931
<b>Human Swiss-Prot Number</b>	P49840
<b>Alternative Names</b>	GSK3A; Glycogen synthase kinase-3 alpha; GSK-3 alpha; Serine/threonine-protein kinase GSK3A

## Background

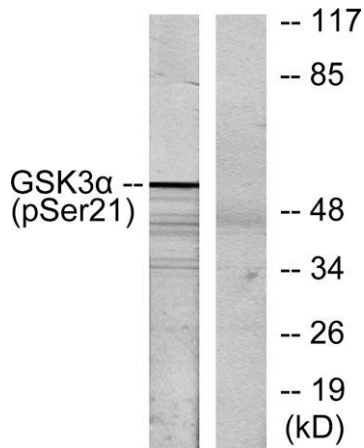
glycogen synthase kinase 3 alpha(GSK3A) Homo sapiens This gene encodes a multifunctional Ser/Thr protein kinase that is implicated in the control of several regulatory proteins including glycogen synthase, and transcription factors, such as JUN. It also plays a role in the WNT and PI3K signaling pathways, as well as regulates the production of beta-amyloid peptides associated with Alzheimer's disease. [provided by RefSeq, Oct 2011],



Western Blot analysis of various cells using Phospho-GSK3 $\alpha$  (S21) Polyclonal Antibody



Immunohistochemistry analysis of paraffin-embedded human breast carcinoma, using GSK3 alpha (Phospho-Ser21) Antibody. The picture on the right is blocked with the phospho peptide.



**Western blot analysis of lysates from ovary cancer, using GSK3 alpha (Phospho-Ser21) Antibody. The lane on the right is blocked with the phospho peptide.**