

GATA-1 (phospho Ser310) rabbit pAb**Cat#: orb764194 (Manual)**

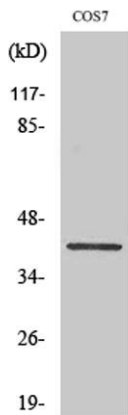
For research use only. Not intended for diagnostic use.

Product Name	GATA-1 (phospho Ser310) rabbit pAb
Host species	Rabbit
Applications	WB;ELISA
Species Cross-Reactivity	Human;Mouse;Rat;Monkey
Recommended dilutions	Western Blot: 1/500 - 1/2000. ELISA: 1/20000. Not yet tested in other applications.
Immunogen	The antiserum was produced against synthesized peptide derived from human GATA1 around the phosphorylation site of Ser310. AA range:277-326
Specificity	Phospho-GATA-1 (S310) Polyclonal Antibody detects endogenous levels of GATA-1 protein only when phosphorylated at S310.
Formulation	Liquid in PBS containing 50% glycerol, 0.5% BSA and 0.02% sodium azide..
Storage	Store at -20°C. Avoid repeated freeze-thaw cycles.
Protein Name	Erythroid transcription factor
Gene Name	GATA1
Cellular localization	Nucleus.
Purification	The antibody was affinity-purified from rabbit antiserum by affinity-chromatography using epitope-specific immunogen.
Clonality	Polyclonal

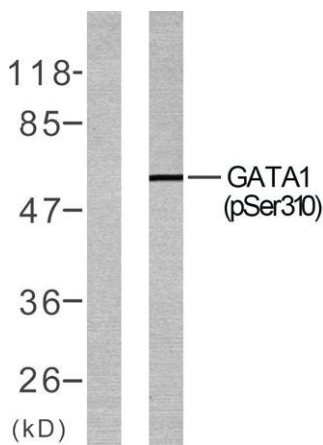
Concentration	1 mg/ml
Observed band	
Human Gene ID	2623
Human Swiss-Prot Number	P15976
Alternative Names	GATA1; ERYF1; GF1; Erythroid transcription factor; Eryf1; GATA-binding factor 1; GATA-1; GF-1; NF-E1 DNA-binding protein

Background

This gene encodes a protein which belongs to the GATA family of transcription factors. The protein plays an important role in erythroid development by regulating the switch of fetal hemoglobin to adult hemoglobin. Mutations in this gene have been associated with X-linked dyserythropoietic anemia and thrombocytopenia. [provided by RefSeq, Jul 2008],



Western Blot analysis of various cells using Phospho-GATA-1 (S310) Polyclonal Antibody diluted at 1:500 cells nucleus extracted by Minute TM Cytoplasmic and Nuclear Fractionation kit (SC-003, Inventbiotech, MN, USA).



Western blot analysis of lysates from COS7 cells treated with EPO, using GATA1 (Phospho-Ser310) Antibody. The lane on the left is blocked with the phospho peptide.