

G3BP1 (phospho Ser232) rabbit pAb**Cat#: orb764192 (Manual)**

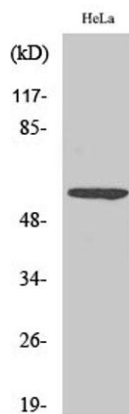
For research use only. Not intended for diagnostic use.

| | |
|---------------------------------|--|
| Product Name | G3BP1 (phospho Ser232) rabbit pAb |
| Host species | Rabbit |
| Applications | WB;IHC;IF;ELISA |
| Species Cross-Reactivity | Human;Mouse |
| Recommended dilutions | Western Blot: 1/500 - 1/2000. Immunohistochemistry: 1/100 - 1/300. ELISA: 1/5000. Not yet tested in other applications. |
| Immunogen | The antiserum was produced against synthesized peptide derived from human G3BP-1 around the phosphorylation site of Ser232. AA range:216-248 |
| Specificity | Phospho-G3BP1 (S232) Polyclonal Antibody detects endogenous levels of G3BP1 protein only when phosphorylated at S232. |
| Formulation | Liquid in PBS containing 50% glycerol, 0.5% BSA and 0.02% sodium azide.. |
| Storage | Store at -20°C. Avoid repeated freeze-thaw cycles. |
| Protein Name | Ras GTPase-activating protein-binding protein 1 |
| Gene Name | G3BP1 |
| Cellular localization | Cytoplasm, cytosol . Perikaryon . Cytoplasm, Stress granule . Nucleus . Cytoplasmic in proliferating cells (PubMed:11604510). Cytosolic and partially nuclear in resting cells (PubMed:11604510). Recruited to stress granules in response to arsenite treatment (PubMed:12642610, PubMed:20180778). The unphosphorylated form is recruited to stress granules (PubMed:12642610). HRAS signaling contributes to this process by regulating G3BP dephosphorylation (PubMed:12642610). . |

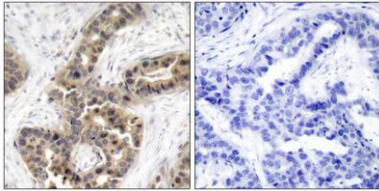
| | |
|--------------------------------|---|
| Purification | The antibody was affinity-purified from rabbit antiserum by affinity-chromatography using epitope-specific immunogen. |
| Clonality | Polyclonal |
| Concentration | 1 mg/ml |
| Observed band | 60kD |
| Human Gene ID | 10146 |
| Human Swiss-Prot Number | Q13283 |
| Alternative Names | G3BP1; G3BP; Ras GTPase-activating protein-binding protein 1; G3BP-1; ATP-dependent DNA helicase VIII; hDH VIII; GAP SH3 domain-binding protein 1 |

Background

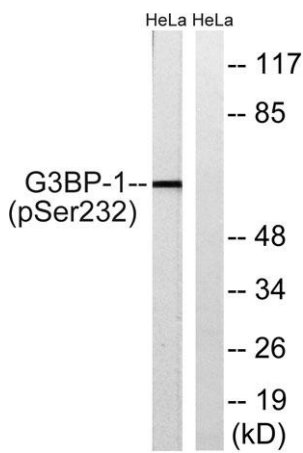
This gene encodes one of the DNA-unwinding enzymes which prefers partially unwound 3'-tailed substrates and can also unwind partial RNA/DNA and RNA/RNA duplexes in an ATP-dependent fashion. This enzyme is a member of the heterogeneous nuclear RNA-binding proteins and is also an element of the Ras signal transduction pathway. It binds specifically to the Ras-GTPase-activating protein by associating with its SH3 domain. Several alternatively spliced transcript variants of this gene have been described, but the full-length nature of some of these variants has not been determined. [provided by RefSeq, Jul 2008],



Western Blot analysis of various cells using Phospho-G3BP1 (S232) Polyclonal Antibody



Immunohistochemistry analysis of paraffin-embedded human breast cancer, using G3BP-1 (Phospho-Ser232) Antibody. The picture on the right is blocked with the G3BP-1 (Phospho-Ser232) peptide.



Western blot analysis of extracts from HeLa cells, using G3BP-1 (Phospho-Ser232) Antibody. The lane on the right is treated with the synthesized peptide.