

EGFR (phospho Tyr1197) rabbit pAb**Cat#: orb764178 (Manual)**

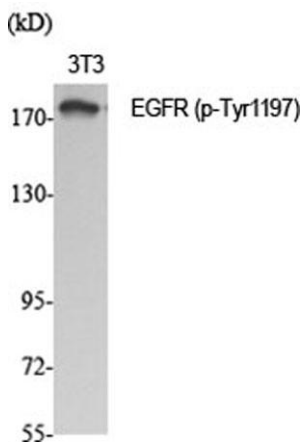
For research use only. Not intended for diagnostic use.

Product Name	EGFR (phospho Tyr1197) rabbit pAb
Host species	Rabbit
Applications	WB;IHC;IF;ELISA
Species Cross-Reactivity	Human;Mouse;Rat
Recommended dilutions	Western Blot: 1/500 - 1/2000. Immunohistochemistry: 1/100 - 1/300. ELISA: 1/10000. Not yet tested in other applications.
Immunogen	The antiserum was produced against synthesized peptide derived from human EGFR around the phosphorylation site of Tyr1197. AA range:1161-1210
Specificity	Phospho-EGFR (Y1197) Polyclonal Antibody detects endogenous levels of EGFR protein only when phosphorylated at Y1197.
Formulation	Liquid in PBS containing 50% glycerol, 0.5% BSA and 0.02% sodium azide..
Storage	Store at -20°C. Avoid repeated freeze-thaw cycles.
Protein Name	Epidermal growth factor receptor
Gene Name	EGFR
Cellular localization	Cell membrane ; Single-pass type I membrane protein . Endoplasmic reticulum membrane ; Single-pass type I membrane protein. Golgi apparatus membrane; Single-pass type I membrane protein. Nucleus membrane; Single-pass type I membrane protein. Endosome . Endosome membrane. Nucleus . In response to EGF, translocated from the cell membrane to the nucleus via Golgi and ER (PubMed:20674546, PubMed:17909029). Endocytosed upon activation by ligand (PubMed:2790960, PubMed:17182860, PubMed:27153536, PubMed:17909029). Colocalized with GPER1 in the nucleus of estrogen agonist-induced cancer-associated fibroblasts (CAF) (PubMed:20551055). .; [Isoform 2]: Secreted.

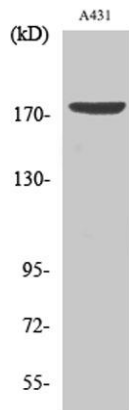
Purification	The antibody was affinity-purified from rabbit antiserum by affinity-chromatography using epitope-specific immunogen.
Clonality	Polyclonal
Concentration	1 mg/ml
Observed band	175kD
Human Gene ID	1956
Human Swiss-Prot Number	P00533
Alternative Names	EGFR; ERBB; ERBB1; HER1; Epidermal growth factor receptor; Proto-oncogene c-ErbB-1; Receptor tyrosine-protein kinase erbB-1

Background

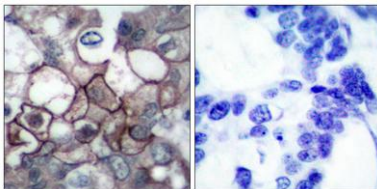
The protein encoded by this gene is a transmembrane glycoprotein that is a member of the protein kinase superfamily. This protein is a receptor for members of the epidermal growth factor family. EGFR is a cell surface protein that binds to epidermal growth factor. Binding of the protein to a ligand induces receptor dimerization and tyrosine autophosphorylation and leads to cell proliferation. Mutations in this gene are associated with lung cancer. [provided by RefSeq, Jun 2016],



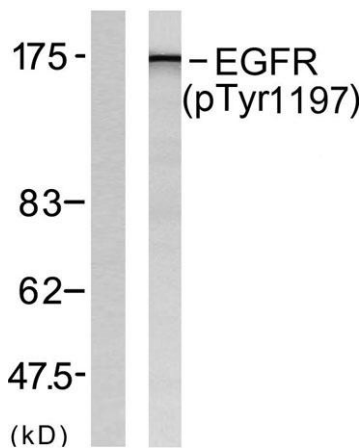
Western Blot analysis of various cells using Phospho-EGFR (Y1197) Polyclonal Antibody diluted at 1:1000



Western Blot analysis of A431 cells using Phospho-EGFR (Y1197) Polyclonal Antibody diluted at 1:1000



Immunohistochemistry analysis of paraffin-embedded human breast carcinoma, using EGFR (Phospho-Tyr1197) Antibody. The picture on the right is blocked with the phospho peptide.



Western blot analysis of lysates from A431 cells treated with EGF 40 μ M 10', using EGFR (Phospho-Tyr1197) Antibody. The lane on the left is blocked with the phospho peptide.