

Dok-2 (phospho Tyr299) rabbit pAb**Cat#: orb764174 (Manual)**

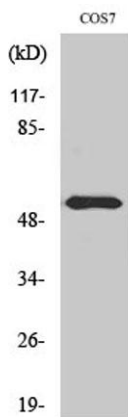
For research use only. Not intended for diagnostic use.

Product Name	Dok-2 (phospho Tyr299) rabbit pAb
Host species	Rabbit
Applications	WB;IF;ELISA
Species Cross-Reactivity	Human;Mouse;Monkey
Recommended dilutions	Western Blot: 1/500 - 1/2000. Immunofluorescence: 1/200 - 1/1000. ELISA: 1/20000. Not yet tested in other applications.
Immunogen	The antiserum was produced against synthesized peptide derived from human p56 Dok-2 around the phosphorylation site of Tyr299. AA range:266-315
Specificity	Phospho-Dok-2 (Y299) Polyclonal Antibody detects endogenous levels of Dok-2 protein only when phosphorylated at Y299.
Formulation	Liquid in PBS containing 50% glycerol, 0.5% BSA and 0.02% sodium azide..
Storage	Store at -20°C. Avoid repeated freeze-thaw cycles.
Protein Name	Docking protein 2
Gene Name	DOK2
Cellular localization	cytosol,
Purification	The antibody was affinity-purified from rabbit antiserum by affinity-chromatography using epitope-specific immunogen.
Clonality	Polyclonal

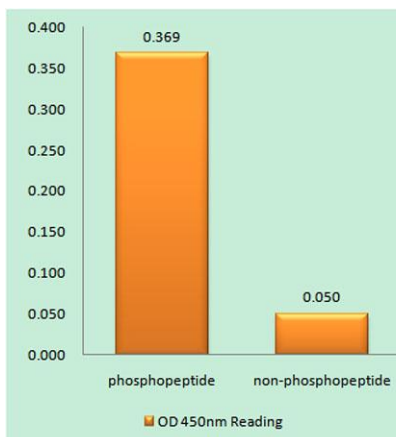
Concentration	1 mg/ml
Observed band	48kD
Human Gene ID	9046
Human Swiss-Prot Number	O60496
Alternative Names	DOK2; Docking protein 2; Downstream of tyrosine kinase 2; p56(dok-2)

Background

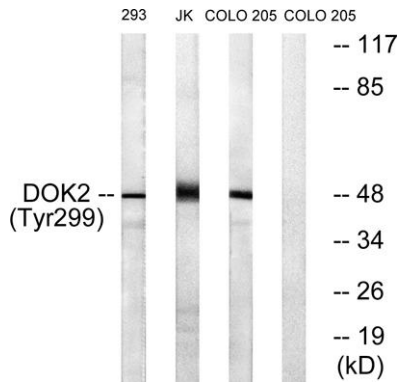
docking protein 2(DOK2) Homo sapiens The protein encoded by this gene is constitutively tyrosine phosphorylated in hematopoietic progenitors isolated from chronic myelogenous leukemia (CML) patients in the chronic phase. It may be a critical substrate for p210(bcr/abl), a chimeric protein whose presence is associated with CML. This encoded protein binds p120 (RasGAP) from CML cells. [provided by RefSeq, Jul 2008],



Western Blot analysis of various cells using Phospho-Dok-2 (Y299) Polyclonal Antibody



Enzyme-Linked Immunosorbent Assay (Phospho-ELISA) for Immunogen Phosphopeptide (Phospho-left) and Non-Phosphopeptide (Phospho-right), using p56 Dok-2 (Phospho-Tyr299) Antibody



Western blot analysis of lysates from COS7 cells treated with insulin 0.01U/ml 15', Jurkat cells treated with insulin 0.01U/ml 15' and 293 cells treated with serum 20% 15', using p56 Dok-2 (Phospho-Tyr299) Antibody. The lane on the right is blocked with t