

Caveolin-1 (phospho Tyr14) rabbit pAb**Cat#: orb764154 (Manual)**

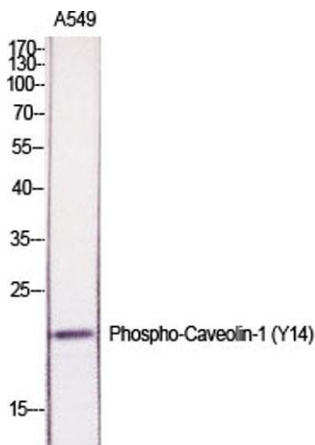
For research use only. Not intended for diagnostic use.

Product Name	Caveolin-1 (phospho Tyr14) rabbit pAb
Host species	Rabbit
Applications	WB;ELISA
Species Cross-Reactivity	Human;Mouse;Rat
Recommended dilutions	Western Blot: 1/500 - 1/2000. ELISA: 1/20000. Not yet tested in other applications.
Immunogen	The antiserum was produced against synthesized peptide derived from human Caveolin-1 around the phosphorylation site of Tyr14. AA range:5-54
Specificity	Phospho-Caveolin-1 (Y14) Polyclonal Antibody detects endogenous levels of Caveolin-1 protein only when phosphorylated at Y14.
Formulation	Liquid in PBS containing 50% glycerol, 0.5% BSA and 0.02% sodium azide..
Storage	Store at -20°C. Avoid repeated freeze-thaw cycles.
Protein Name	Caveolin-1
Gene Name	CAV1
Cellular localization	Golgi apparatus membrane; Peripheral membrane protein. Cell membrane; Peripheral membrane protein. Membrane, caveola ; Peripheral membrane protein. Membrane raft . Golgi apparatus, trans-Golgi network . Colocalized with DPP4 in membrane rafts. Potential hairpin-like structure in the membrane. Membrane protein of caveolae.
Purification	The antibody was affinity-purified from rabbit antiserum by affinity-chromatography using epitope-specific immunogen.

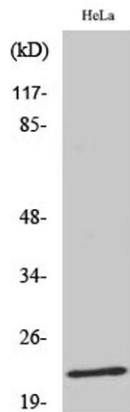
Clonality	Polyclonal
Concentration	1 mg/ml
Observed band	20kD
Human Gene ID	857
Human Swiss-Prot Number	Q03135
Alternative Names	CAV1; CAV; Caveolin-1

Background

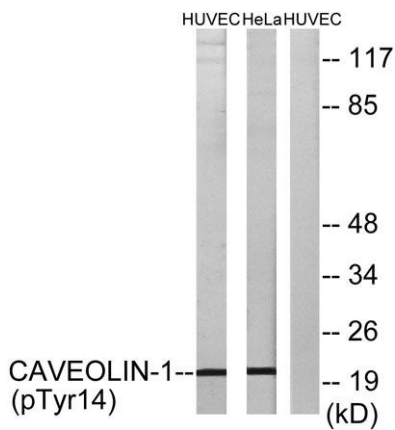
The scaffolding protein encoded by this gene is the main component of the caveolae plasma membranes found in most cell types. The protein links integrin subunits to the tyrosine kinase FYN, an initiating step in coupling integrins to the Ras-ERK pathway and promoting cell cycle progression. The gene is a tumor suppressor gene candidate and a negative regulator of the Ras-p42/44 mitogen-activated kinase cascade. Caveolin 1 and caveolin 2 are located next to each other on chromosome 7 and express colocalizing proteins that form a stable hetero-oligomeric complex. Mutations in this gene have been associated with Berardinelli-Seip congenital lipodystrophy. Alternatively spliced transcripts encode alpha and beta isoforms of caveolin 1.[provided by RefSeq, Mar 2010],



Western Blot analysis of various cells using Phospho-Caveolin-1 (Y14) Polyclonal Antibody diluted at 1:1000



Western Blot analysis of HeLa cells using Phospho-Caveolin-1 (Y14) Polyclonal Antibody diluted at 1:1000



Western blot analysis of lysates from HUVEC cells treated with PMA 125ng/ml 30' and HeLa cells treated with LPS 100ng/ml 30', using Caveolin-1 (Phospho-Tyr14) Antibody. The lane on the right is blocked with the phospho peptide.