

Bcl-2 (phospho Ser70) rabbit pAb**Cat#: orb764147 (Manual)**

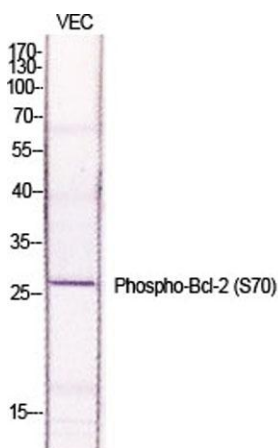
For research use only. Not intended for diagnostic use.

Product Name	Bcl-2 (phospho Ser70) rabbit pAb
Host species	Rabbit
Applications	WB;IHC;IF;IP;ELISA
Species Cross-Reactivity	Human;Monkey
Recommended dilutions	Western Blot: 1/500 - 1/2000. Immunohistochemistry: 1/100 - 1/300. Immunoprecipitation: 2-5 ug/mg lysate. ELISA: 1/10000. Not yet tested in other applications.
Immunogen	The antiserum was produced against synthesized peptide derived from human BCL-2 around the phosphorylation site of Ser70. AA range:41-90
Specificity	Phospho-Bcl-2 (S70) Polyclonal Antibody detects endogenous levels of Bcl-2 protein only when phosphorylated at S70.
Formulation	Liquid in PBS containing 50% glycerol, 0.5% BSA and 0.02% sodium azide..
Storage	Store at -20°C. Avoid repeated freeze-thaw cycles.
Protein Name	Apoptosis regulator Bcl-2
Gene Name	BCL2
Cellular localization	Mitochondrion outer membrane ; Single-pass membrane protein . Nucleus membrane ; Single-pass membrane protein . Endoplasmic reticulum membrane ; Single-pass membrane protein . Cytoplasm .
Purification	The antibody was affinity-purified from rabbit antiserum by affinity-chromatography using epitope-specific immunogen.

Clonality	Polyclonal
Concentration	1 mg/ml
Observed band	26kD
Human Gene ID	596
Human Swiss-Prot Number	P10415
Alternative Names	BCL2; Apoptosis regulator Bcl-2

Background

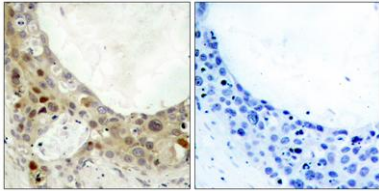
BCL2, apoptosis regulator(BCL2) Homo sapiens This gene encodes an integral outer mitochondrial membrane protein that blocks the apoptotic death of some cells such as lymphocytes. Constitutive expression of BCL2, such as in the case of translocation of BCL2 to Ig heavy chain locus, is thought to be the cause of follicular lymphoma. Alternative splicing results in multiple transcript variants. [provided by RefSeq, Feb 2016],



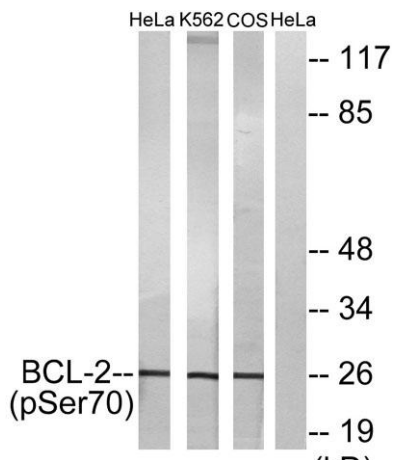
Western Blot analysis of various cells using Phospho-Bcl-2 (S70) Polyclonal Antibody diluted at 1:1000



Western Blot analysis of HeLa cells using Phospho-Bcl-2 (S70) Polyclonal Antibody diluted at 1:1000



Immunohistochemistry analysis of paraffin-embedded human breast carcinoma, using BCL-2 (Phospho-Ser70) Antibody. The picture on the right is blocked with the phospho peptide.



Western blot analysis of lysates from HeLa cells treated with LPS (40nM, 30mins), K562 cells treated with calyculin A (50ng/ml, 30mins) and COS-7 cells treated with H₂O₂ (1ng/ml, 15mins), using BCL-2 (Phospho-Ser70) Antibody. The lane on the right is blocked with the phospho peptide.