

ATF-2 (phospho Thr73) rabbit pAb**Cat#: orb764143 (Manual)**

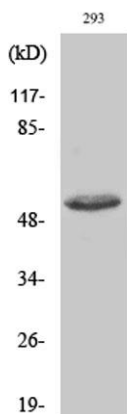
For research use only. Not intended for diagnostic use.

Product Name	ATF-2 (phospho Thr73) rabbit pAb
Host species	Rabbit
Applications	WB;IHC;IF;IP;ELISA
Species Cross-Reactivity	Human;Mouse;Rat
Recommended dilutions	Western Blot: 1/500 - 1/2000. Immunohistochemistry: 1/100 - 1/300. Immunoprecipitation: 2-5 ug/mg lysate. ELISA: 1/20000. Not yet tested in other applications.
Immunogen	The antiserum was produced against synthesized peptide derived from human ATF2 around the phosphorylation site of Thr73 or 55. AA range:40-89
Specificity	Phospho-ATF-2 (T73) Polyclonal Antibody detects endogenous levels of ATF-2 protein only when phosphorylated at T73.
Formulation	Liquid in PBS containing 50% glycerol, 0.5% BSA and 0.02% sodium azide..
Storage	Store at -20°C. Avoid repeated freeze-thaw cycles.
Protein Name	Cyclic AMP-dependent transcription factor ATF-2
Gene Name	ATF2
Cellular localization	Nucleus. Cytoplasm. Mitochondrion outer membrane. Shuttles between the cytoplasm and the nucleus and heterodimerization with JUN is essential for the nuclear localization. Localization to the cytoplasm is observed under conditions of cellular stress and i
Purification	The antibody was affinity-purified from rabbit antiserum by affinity-chromatography using epitope-specific immunogen.

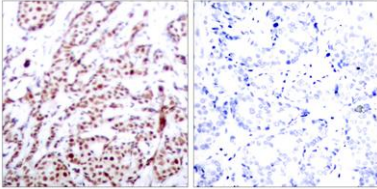
Clonality	Polyclonal
Concentration	1 mg/ml
Observed band	
Human Gene ID	1386
Human Swiss-Prot Number	P15336
Alternative Names	ATF2; CREB2; CREBP1; Cyclic AMP-dependent transcription factor ATF-2; cAMP-dependent transcription factor ATF-2; Activating transcription factor 2; Cyclic AMP-responsive element-binding protein 2; CREB-2; cAMP-responsive element-binding pro

Background

activating transcription factor 2(ATF2) Homo sapiens This gene encodes a transcription factor that is a member of the leucine zipper family of DNA binding proteins. The encoded protein has been identified as a moonlighting protein based on its ability to perform mechanistically distinct functions This protein binds to the cAMP-responsive element (CRE), an octameric palindrome. It forms a homodimer or a heterodimer with c-Jun and stimulates CRE-dependent transcription. This protein is also a histone acetyltransferase (HAT) that specifically acetylates histones H2B and H4 in vitro; thus it may represent a class of sequence-specific factors that activate transcription by direct effects on chromatin components. The encoded protein may also be involved in cell's DNA damage response independent of its role in transcriptional regulation. Several alternatively spliced transcript variants have been found for this gene [provided by RefSeq, Jan 2014



Western Blot analysis of various cells using Phospho-ATF-2 (T73) Polyclonal Antibody



Immunohistochemistry analysis of paraffin-embedded human breast carcinoma, using ATF2 (Phospho-Thr73 or 55) Antibody. The picture on the right is blocked with the phospho peptide.