

**Akt2 (phospho Ser474) rabbit pAb****Cat#: orb764133 (Manual)**

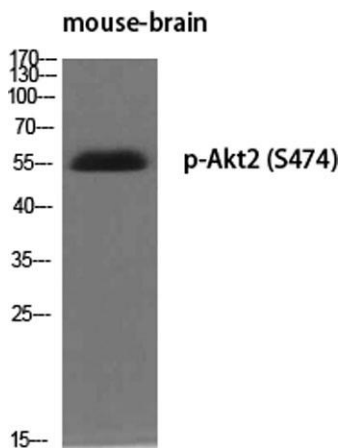
For research use only. Not intended for diagnostic use.

<b>Product Name</b>	Akt2 (phospho Ser474) rabbit pAb
<b>Host species</b>	Rabbit
<b>Applications</b>	WB;IHC;IF;ELISA
<b>Species Cross-Reactivity</b>	Human;Mouse;Rat
<b>Recommended dilutions</b>	Western Blot: 1/500 - 1/2000. Immunohistochemistry: 1/100 - 1/300. ELISA: 1/20000. Not yet tested in other applications.
<b>Immunogen</b>	The antiserum was produced against synthesized peptide derived from human Akt2 around the phosphorylation site of Ser474. AA range:432-481
<b>Specificity</b>	Phospho-Akt2 (S474) Polyclonal Antibody detects endogenous levels of Akt2 protein only when phosphorylated at S474.
<b>Formulation</b>	Liquid in PBS containing 50% glycerol, 0.5% BSA and 0.02% sodium azide..
<b>Storage</b>	Store at -20°C. Avoid repeated freeze-thaw cycles.
<b>Protein Name</b>	RAC-beta serine/threonine-protein kinase
<b>Gene Name</b>	AKT2
<b>Cellular localization</b>	Cytoplasm. Nucleus. Cell membrane; Peripheral membrane protein. Early endosome . Localizes within both nucleus and cytoplasm of proliferative primary myoblasts and mostly within the nucleus of differentiated primary myoblasts. By virtue of the N-terminal PH domain, is recruited to sites of the plasma membrane containing increased PI(3,4,5)P3 or PI(3,4)P2, cell membrane targeting is also facilitated by interaction with CLIP3. Colocalizes with WDFY2 in early endosomes (By similarity). .

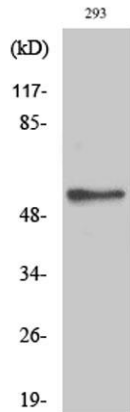
<b>Purification</b>	The antibody was affinity-purified from rabbit antiserum by affinity-chromatography using epitope-specific immunogen.
<b>Clonality</b>	Polyclonal
<b>Concentration</b>	1 mg/ml
<b>Observed band</b>	56kD
<b>Human Gene ID</b>	208
<b>Human Swiss-Prot Number</b>	P31751
<b>Alternative Names</b>	AKT2; RAC-beta serine/threonine-protein kinase; Protein kinase Akt-2; Protein kinase B beta; PKB beta; RAC-PK-beta

**Background**

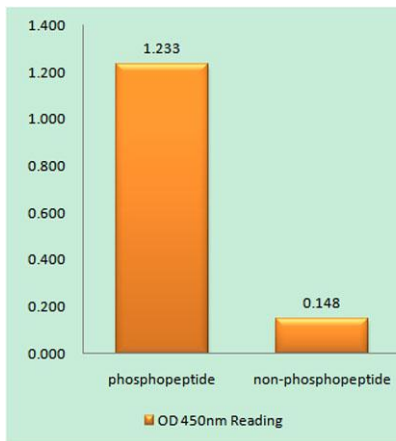
This gene is a putative oncogene encoding a protein belonging to a subfamily of serine/threonine kinases containing SH2-like (Src homology 2-like) domains. The gene was shown to be amplified and overexpressed in 2 of 8 ovarian carcinoma cell lines and 2 of 15 primary ovarian tumors. Overexpression contributes to the malignant phenotype of a subset of human ductal pancreatic cancers. The encoded protein is a general protein kinase capable of phosphorylating several known proteins. [provided by RefSeq, Jul 2008],



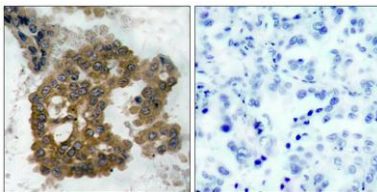
Western Blot analysis of various cells using Phospho-Akt2 (S474) Polyclonal Antibody diluted at 1:500



Western Blot analysis of 293 cells using Phospho-Akt2 (S474) Polyclonal Antibody diluted at 1:500



Enzyme-Linked Immunosorbent Assay (Phospho-ELISA) for Immunogen Phosphopeptide (Phospho-left) and Non-Phosphopeptide (Phospho-right), using Akt2 (Phospho-Ser474) Antibody



Immunohistochemistry analysis of paraffin-embedded human lung carcinoma, using Akt2 (Phospho-Ser474) Antibody. The picture on the right is blocked with the phospho peptide.