

HA-tag rabbit pAb**Cat#: orb763952 (Manual)**

For research use only. Not intended for diagnostic use.

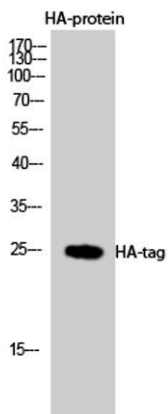
Product Name	HA-tag rabbit pAb
Host species	Rabbit
Applications	WB;ELISA;IP;ELISA
Species Cross-Reactivity	Species independent
Recommended dilutions	Western Blot: 1/1000 - 1/3000;. IP: 1:300 Not yet tested in other applications.
Immunogen	HA synthetic peptide conjugated to KLH.
Specificity	HA-tag Polyclonal Antibody detects HA-tagged recombinant proteins or HA-tagged proteins overexpressed in cells.
Formulation	Liquid in PBS containing 50% glycerol, 0.5% BSA and 0.05% sodium azide..
Storage	Store at -20°C. Avoid repeated freeze-thaw cycles.
Protein Name	HA-Tag
Gene Name	HA Tag
Cellular localization	
Purification	The antibody was affinity-purified from rabbit antiserum by affinity-chromatography using epitope-specific immunogen.
Clonality	Polyclonal

Explore. Bioreagents.

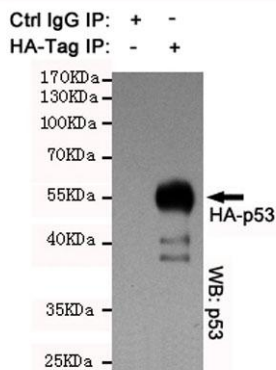
Concentration	1 mg/ml
Observed band	15kD
Human Gene ID	
Human Swiss-Prot Number	
Alternative Names	HA epitope tag; hemagglutinin

Background

The HA tag (Y-P-Y-D-V-P-D-Y-A) is derived from an epitope (amino acids 98-106) of the influenza hemagglutinin (HA) protein. HA tag is used as a general epitope tag in expression vectors for many recombinant proteins. The presence of HA tag facilitates the detection, isolation and purification of recombinant fusion proteins.



Western Blot analysis using HA-tag Polyclonal Antibody against HEK293 cells transfected with vector overexpressing HA tag (1) and untransfected (2). Antibody was diluted at 1:2000. Secondary antibody(catalog#:RS0002) was diluted at 1:20000



IP analysis of HA-tag Polyclonal Antibody