

Cleaved-Plasma Kallikrein HC (R390) rabbit pAb**Cat#: orb763947 (Manual)**

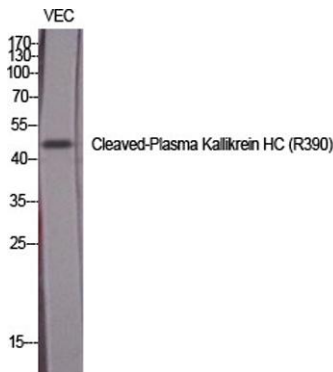
For research use only. Not intended for diagnostic use.

Product Name	Cleaved-Plasma Kallikrein HC (R390) rabbit pAb
Host species	Rabbit
Applications	WB;IHC;IF;ELISA
Species Cross-Reactivity	Human;Rat;Mouse;
Recommended dilutions	Western Blot: 1/500 - 1/2000. Immunohistochemistry: 1/100 - 1/300. ELISA: 1/10000. Not yet tested in other applications.
Immunogen	The antiserum was produced against synthesized peptide derived from human KLKB1. AA range:341-390
Specificity	Cleaved-Plasma Kallikrein HC (R390) Polyclonal Antibody detects endogenous levels of fragment of activated Plasma Kallikrein HC protein resulting from cleavage adjacent to R390.
Formulation	Liquid in PBS containing 50% glycerol, 0.5% BSA and 0.02% sodium azide..
Storage	Store at -20°C. Avoid repeated freeze-thaw cycles.
Protein Name	Plasma kallikrein
Gene Name	KLKB1
Cellular localization	Secreted.
Purification	The antibody was affinity-purified from rabbit antiserum by affinity-chromatography using epitope-specific immunogen.
Clonality	Polyclonal

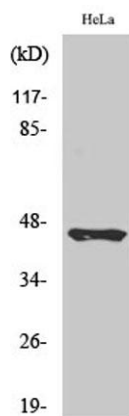
Concentration	1 mg/ml
Observed band	45kD
Human Gene ID	3818
Human Swiss-Prot Number	P03952
Alternative Names	KLKB1; KLK3; Plasma kallikrein; Fletcher factor; Kininogenin; Plasma prekallikrein

Background

This gene encodes a glycoprotein that participates in the surface-dependent activation of blood coagulation, fibrinolysis, kinin generation and inflammation. The encoded preproprotein present in plasma as a non-covalent complex with high molecular weight kininogen undergoes proteolytic processing mediated by activated coagulation factor XII to generate a disulfide-linked, heterodimeric serine protease comprised of heavy and light chains. Certain mutations in this gene cause prekallikrein deficiency. Alternative splicing results in multiple transcript variants encoding different isoforms. [provided by RefSeq, Jan 2016],



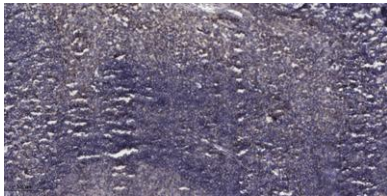
Western Blot analysis of various cells using Cleaved-Plasma Kallikrein HC (R390) Polyclonal Antibody diluted at 1:1000



Western Blot analysis of HeLa cells using Cleaved-Plasma Kallikrein HC (R390) Polyclonal Antibody diluted at 1:1000



Western blot analysis of lysates from HeLa cells, using KLKB1 (heavy chain, Cleaved-Arg390) Antibody. The lane on the right is blocked with the synthesized peptide.



Immunohistochemical analysis of paraffin-embedded human tonsil. 1, Antibody was diluted at 1:200(4° overnight). 2, Tris-EDTA,pH9.0 was used for antigen retrieval. 3,Secondary antibody was diluted at 1:200(room temperature, 30min).