

**Cleaved-ITI-H2 (D702) rabbit pAb****Cat#: orb763941 (Manual)**

For research use only. Not intended for diagnostic use.

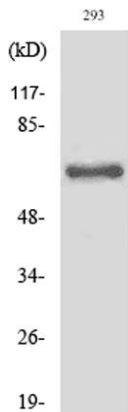
<b>Product Name</b>	Cleaved-ITI-H2 (D702) rabbit pAb
<b>Host species</b>	Rabbit
<b>Applications</b>	WB;ELISA
<b>Species Cross-Reactivity</b>	Human;Rat;Mouse;
<b>Recommended dilutions</b>	Western Blot: 1/500 - 1/2000. ELISA: 1/10000. Not yet tested in other applications.
<b>Immunogen</b>	The antiserum was produced against synthesized peptide derived from human ITIH2. AA range:653-702
<b>Specificity</b>	Cleaved-ITI-H2 (D702) Polyclonal Antibody detects endogenous levels of fragment of activated ITI-H2 protein resulting from cleavage adjacent to D702.
<b>Formulation</b>	Liquid in PBS containing 50% glycerol, 0.5% BSA and 0.02% sodium azide..
<b>Storage</b>	Store at -20°C. Avoid repeated freeze-thaw cycles.
<b>Protein Name</b>	Inter-alpha-trypsin inhibitor heavy chain H2
<b>Gene Name</b>	ITIH2
<b>Cellular localization</b>	Secreted.
<b>Purification</b>	The antibody was affinity-purified from rabbit antiserum by affinity-chromatography using epitope-specific immunogen.
<b>Clonality</b>	Polyclonal

Explore. Bioreagents.

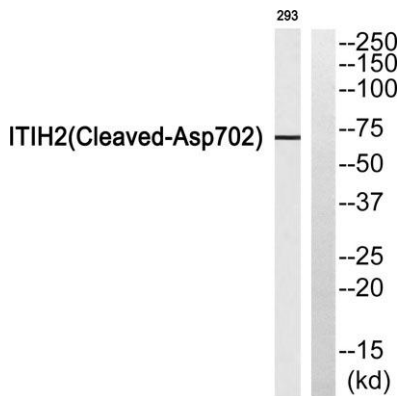
<b>Concentration</b>	1 mg/ml
<b>Observed band</b>	72kD
<b>Human Gene ID</b>	3698
<b>Human Swiss-Prot Number</b>	P19823
<b>Alternative Names</b>	ITIH2; IGHEP2; Inter-alpha-trypsin inhibitor heavy chain H2; ITI heavy chain H2; ITI-HC2; Inter-alpha-inhibitor heavy chain 2; Inter-alpha-trypsin inhibitor complex component II; Serum-derived hyaluronan-associated protein; SHAP

**Background**

The inter-alpha-trypsin inhibitors (ITI) are a family of structurally related plasma serine protease inhibitors involved in extracellular matrix stabilization and in prevention of tumor metastasis. The ITI family contains multiple proteins made up of a light chain (see MIM 176870) and a variable number of heavy chains (Salier et al., 1987 [PubMed 2446322]; Himmelfarb et al., 2004 [PubMed 14744536]).[supplied by OMIM, Nov 2009],



**Western Blot analysis of various cells using Cleaved-ITI-H2 (D702) Polyclonal Antibody**



**Western blot analysis of ITIH2 (Cleaved-Asp702) Antibody. The lane on the right is blocked with the ITIH2 (Cleaved-Asp702) peptide.**