

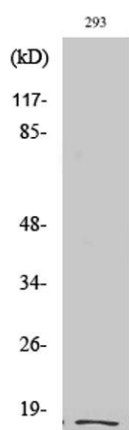
**Cleaved-Integrin  $\alpha 5$  LC (E895) rabbit pAb****Cat#: orb763937 (Manual)**

For research use only. Not intended for diagnostic use.

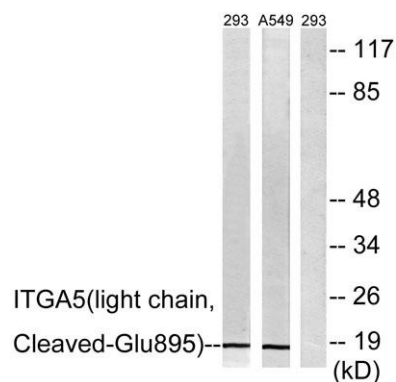
<b>Product Name</b>	Cleaved-Integrin $\alpha 5$ LC (E895) rabbit pAb
<b>Host species</b>	Rabbit
<b>Applications</b>	WB;ELISA
<b>Species Cross-Reactivity</b>	Human;Rat;Mouse;
<b>Recommended dilutions</b>	Western Blot: 1/500 - 1/2000. ELISA: 1/20000. Not yet tested in other applications.
<b>Immunogen</b>	The antiserum was produced against synthesized peptide derived from human ITGA5. AA range:876-925
<b>Specificity</b>	Cleaved-Integrin $\alpha 5$ LC (E895) Polyclonal Antibody detects endogenous levels of fragment of activated Integrin $\alpha 5$ LC protein resulting from cleavage adjacent to E895.
<b>Formulation</b>	Liquid in PBS containing 50% glycerol, 0.5% BSA and 0.02% sodium azide..
<b>Storage</b>	Store at -20°C. Avoid repeated freeze-thaw cycles.
<b>Protein Name</b>	Integrin alpha-5
<b>Gene Name</b>	ITGA5
<b>Cellular localization</b>	Membrane; Single-pass type I membrane protein. Cell junction, focal adhesion . Cell surface .
<b>Purification</b>	The antibody was affinity-purified from rabbit antiserum by affinity-chromatography using epitope-specific immunogen.
<b>Clonality</b>	Polyclonal

<b>Concentration</b>	1 mg/ml
<b>Observed band</b>	18kD
<b>Human Gene ID</b>	3678
<b>Human Swiss-Prot Number</b>	P08648
<b>Alternative Names</b>	ITGA5; FNRA; Integrin alpha-5; CD49 antigen-like family member E; Fibronectin receptor subunit alpha; Integrin alpha-F; VLA-5; CD antigen CD49e

**Background** integrin subunit alpha 5(ITGA5) Homo sapiens The product of this gene belongs to the integrin alpha chain family. Integrins are heterodimeric integral membrane proteins composed of an alpha subunit and a beta subunit that function in cell surface adhesion and signaling. The encoded preproprotein is proteolytically processed to generate light and heavy chains that comprise the alpha 5 subunit. This subunit associates with the beta 1 subunit to form a fibronectin receptor. This integrin may promote tumor invasion, and higher expression of this gene may be correlated with shorter survival time in lung cancer patients. Note that the integrin alpha 5 and integrin alpha V subunits are encoded by distinct genes. [provided by RefSeq, Oct 2015],



**Western Blot analysis of various cells using Cleaved-Integrin  $\alpha$ 5 LC (E895) Polyclonal Antibody**



Western blot analysis of lysates from 293 and A549 cells, treated with etoposide 25uM 1h, using ITGA5 (light chain, Cleaved-Glu895) Antibody. The lane on the right is blocked with the synthesized peptide.