

Cleaved-MMP-27 (Y99) rabbit pAb**Cat#: orb763923 (Manual)**

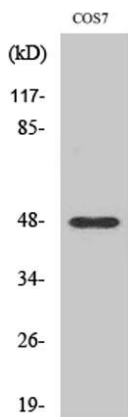
For research use only. Not intended for diagnostic use.

Product Name	Cleaved-MMP-27 (Y99) rabbit pAb
Host species	Rabbit
Applications	WB;ELISA
Species Cross-Reactivity	Human;Monkey
Recommended dilutions	Western Blot: 1/500 - 1/2000. ELISA: 1/10000. Not yet tested in other applications.
Immunogen	The antiserum was produced against synthesized peptide derived from human MMP27. AA range:80-129
Specificity	Cleaved-MMP-27 (Y99) Polyclonal Antibody detects endogenous levels of fragment of activated MMP-27 protein resulting from cleavage adjacent to Y99.
Formulation	Liquid in PBS containing 50% glycerol, 0.5% BSA and 0.02% sodium azide..
Storage	Store at -20°C. Avoid repeated freeze-thaw cycles.
Protein Name	Matrix metalloproteinase-27
Gene Name	MMP27
Cellular localization	Endoplasmic reticulum membrane; Peripheral membrane protein . Retained in the endoplasmic reticulum. .
Purification	The antibody was affinity-purified from rabbit antiserum by affinity-chromatography using epitope-specific immunogen.
Clonality	Polyclonal

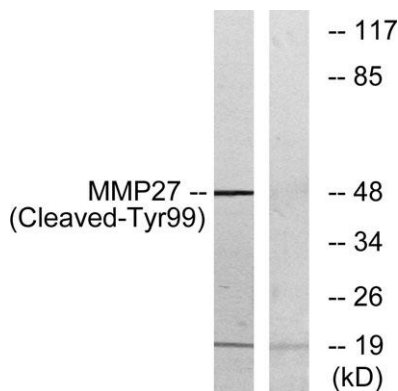
Concentration	1 mg/ml
Observed band	48kD
Human Gene ID	64066
Human Swiss-Prot Number	Q9H306
Alternative Names	MMP27; Matrix metalloproteinase-27; MMP-27

Background

Proteins of the matrix metalloproteinase (MMP) family are involved in the breakdown of extracellular matrix in normal physiological processes, such as embryonic development, reproduction, and tissue remodeling, as well as in disease processes, such as arthritis and metastasis. Most MMP's are secreted as inactive proproteins which are activated when cleaved by extracellular proteinases. [provided by RefSeq, Jul 2008],



Western Blot analysis of various cells using Cleaved-MMP-27 (Y99) Polyclonal Antibody



Western blot analysis of lysates from COS7 cells, treated with etoposide 25uM 1h, using MMP27 (Cleaved-Tyr99) Antibody. The lane on the right is blocked with the synthesized peptide.