

**Cleaved-MMP-12 (G106) rabbit pAb****Cat#: orb763918 (Manual)**

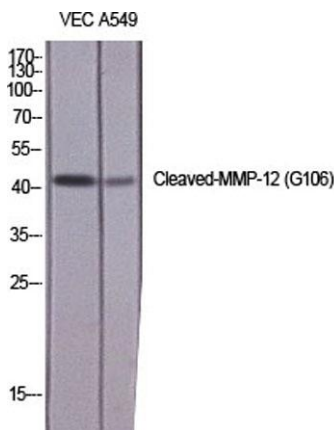
For research use only. Not intended for diagnostic use.

<b>Product Name</b>	Cleaved-MMP-12 (G106) rabbit pAb
<b>Host species</b>	Rabbit
<b>Applications</b>	WB;ELISA
<b>Species Cross-Reactivity</b>	Human;Rat;Mouse;
<b>Recommended dilutions</b>	Western Blot: 1/500 - 1/2000. ELISA: 1/20000. Not yet tested in other applications.
<b>Immunogen</b>	The antiserum was produced against synthesized peptide derived from human MMP12. AA range:87-136
<b>Specificity</b>	Cleaved-MMP-12 (G106) Polyclonal Antibody detects endogenous levels of fragment of activated MMP-12 protein resulting from cleavage adjacent to G106.
<b>Formulation</b>	Liquid in PBS containing 50% glycerol, 0.5% BSA and 0.02% sodium azide..
<b>Storage</b>	Store at -20°C. Avoid repeated freeze-thaw cycles.
<b>Protein Name</b>	Macrophage metalloelastase
<b>Gene Name</b>	MMP12
<b>Cellular localization</b>	Secreted, extracellular space, extracellular matrix .
<b>Purification</b>	The antibody was affinity-purified from rabbit antiserum by affinity-chromatography using epitope-specific immunogen.
<b>Clonality</b>	Polyclonal

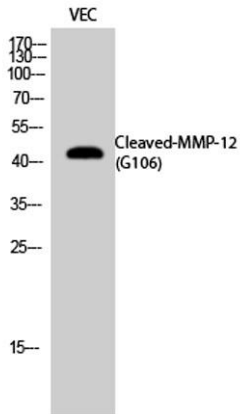
<b>Concentration</b>	1 mg/ml
<b>Observed band</b>	42kD
<b>Human Gene ID</b>	4321
<b>Human Swiss-Prot Number</b>	P39900
<b>Alternative Names</b>	MMP12; HME; Macrophage metalloelastase; MME; Macrophage elastase; ME; hME; Matrix metalloproteinase-12; MMP-12

## Background

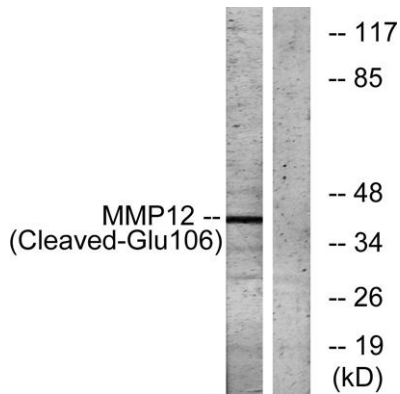
This gene encodes a member of the peptidase M10 family of matrix metalloproteinases (MMPs). Proteins in this family are involved in the breakdown of extracellular matrix in normal physiological processes, such as embryonic development, reproduction, and tissue remodeling, as well as in disease processes, such as arthritis and metastasis. The encoded preprotein is proteolytically processed to generate the mature protease. This protease degrades soluble and insoluble elastin. This gene may play a role in aneurysm formation and mutations in this gene are associated with lung function and chronic obstructive pulmonary disease (COPD). This gene is part of a cluster of MMP genes on chromosome 11. [provided by RefSeq, Jan 2016],



**Western Blot analysis of various cells using Cleaved-MMP-12 (G106) Polyclonal Antibody diluted at 1:1000**



Western Blot analysis of VEC cells using Cleaved-MMP-12 (G106) Polyclonal Antibody diluted at 1:1000



Western blot analysis of lysates from NIH/3T3 cells, treated with etoposide 25uM 1h, using MMP12 (Cleaved-Glu106) Antibody. The lane on the right is blocked with the synthesized peptide.