

Cleaved-Cathepsin Z (L62) rabbit pAb**Cat#: orb763908 (Manual)**

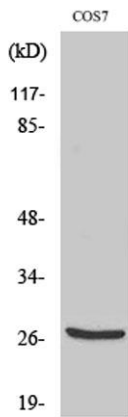
For research use only. Not intended for diagnostic use.

Product Name	Cleaved-Cathepsin Z (L62) rabbit pAb
Host species	Rabbit
Applications	WB;ELISA
Species Cross-Reactivity	Human;Monkey
Recommended dilutions	Western Blot: 1/500 - 1/2000. ELISA: 1/5000. Not yet tested in other applications.
Immunogen	The antiserum was produced against synthesized peptide derived from human CATZ. AA range:43-92
Specificity	Cleaved-Cathepsin Z (L62) Polyclonal Antibody detects endogenous levels of fragment of activated Cathepsin Z protein resulting from cleavage adjacent to L62.
Formulation	Liquid in PBS containing 50% glycerol, 0.5% BSA and 0.02% sodium azide..
Storage	Store at -20°C. Avoid repeated freeze-thaw cycles.
Protein Name	Cathepsin Z
Gene Name	CTSZ
Cellular localization	Lysosome.
Purification	The antibody was affinity-purified from rabbit antiserum by affinity-chromatography using epitope-specific immunogen.
Clonality	Polyclonal

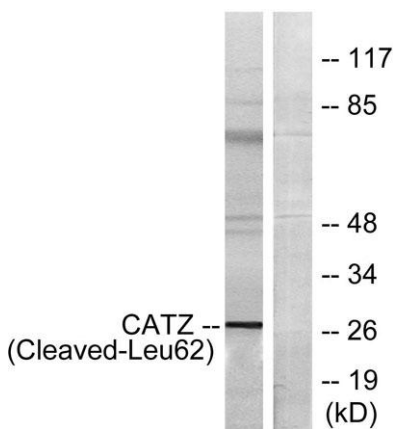
Concentration	1 mg/ml
Observed band	27kD
Human Gene ID	1522
Human Swiss-Prot Number	Q9UBR2
Alternative Names	CTSZ; Cathepsin Z; Cathepsin P; Cathepsin X

Background

The protein encoded by this gene is a lysosomal cysteine proteinase and member of the peptidase C1 family. It exhibits both carboxy-monopeptidase and carboxy-dipeptidase activities. The encoded protein has also been known as cathepsin X and cathepsin P. This gene is expressed ubiquitously in cancer cell lines and primary tumors and, like other members of this family, may be involved in tumorigenesis. [provided by RefSeq, Oct 2008],



Western Blot analysis of various cells using Cleaved-Cathepsin Z (L62) Polyclonal Antibody



Western blot analysis of lysates from COS7 cells, treated with etoposide 25uM 1h, using CATZ (Cleaved-Leu62) Antibody. The lane on the right is blocked with the synthesized peptide.