

Cleaved-Caspase-7 (S199) rabbit pAb**Cat#: orb763881 (Manual)**

For research use only. Not intended for diagnostic use.

Product Name	Cleaved-Caspase-7 (S199) rabbit pAb
Host species	Rabbit
Applications	WB;IHC;IF;ELISA
Species Cross-Reactivity	Human;Mouse
Recommended dilutions	Western Blot: 1/500 - 1/2000. Immunohistochemistry: 1/100 - 1/300. ELISA: 1/40000. Not yet tested in other applications.
Immunogen	The antiserum was produced against synthesized peptide derived from human Caspase 7. AA range:180-229
Specificity	Cleaved-Caspase-7 (S199) Polyclonal Antibody detects endogenous levels of fragment of activated Caspase-7 protein resulting from cleavage adjacent to S199.
Formulation	Liquid in PBS containing 50% glycerol, 0.5% BSA and 0.02% sodium azide..
Storage	Store at -20°C. Avoid repeated freeze-thaw cycles.
Protein Name	Caspase7
Gene Name	CASP7
Cellular localization	Cytoplasm.
Purification	The antibody was affinity-purified from rabbit antiserum by affinity-chromatography using epitope-specific immunogen.
Clonality	Polyclonal

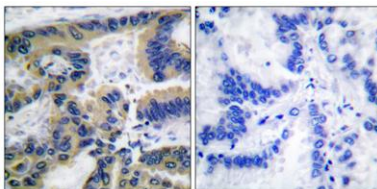
Concentration	1 mg/ml
Observed band	20kD
Human Gene ID	840
Human Swiss-Prot Number	P55210
Alternative Names	CASP7; MCH3; Caspase-7; CASP-7; Apoptotic protease Mch-3; CMH-1; ICE-like apoptotic protease 3; ICE-LAP3

Background

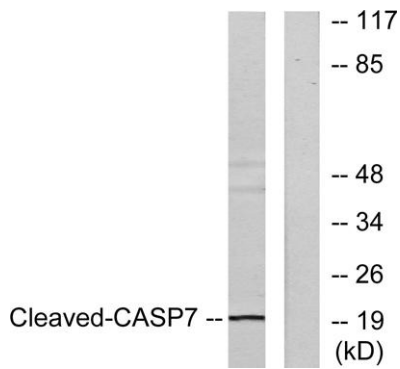
This gene encodes a member of the cysteine-aspartic acid protease (caspase) family. Sequential activation of caspases plays a central role in the execution-phase of cell apoptosis. Caspases exist as inactive proenzymes which undergo proteolytic processing at conserved aspartic residues to produce two subunits, large and small, that dimerize to form the active enzyme. The precursor of the encoded protein is cleaved by caspase 3 and 10, is activated upon cell death stimuli and induces apoptosis. Alternatively spliced transcript variants encoding multiple isoforms have been observed for this gene. [provided by RefSeq, May 2012],



Western Blot analysis of various cells using Cleaved-Caspase-7 (S199) Polyclonal Antibody



Immunohistochemistry analysis of paraffin-embedded human lung carcinoma tissue, using Caspase 7 (Cleaved-Asp198) Antibody. The picture on the right is blocked with the synthesized peptide.



Western blot analysis of lysates from 293 cells, treated with Etoposide 25uM 60', using Caspase 7 (Cleaved-Asp198) Antibody. The lane on the right is blocked with the synthesized peptide.