

Cleaved-Caspase-6 p18 (D179) rabbit pAb**Cat#: orb763879 (Manual)**

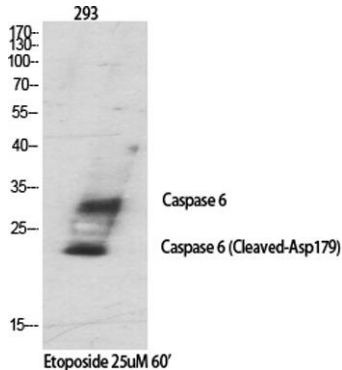
For research use only. Not intended for diagnostic use.

Product Name	Cleaved-Caspase-6 p18 (D179) rabbit pAb
Host species	Rabbit
Applications	WB;IHC;IF;ELISA
Species Cross-Reactivity	Human;Rat
Recommended dilutions	Western Blot: 1/500 - 1/2000. Immunohistochemistry: 1/100 - 1/300. ELISA: 1/40000. Not yet tested in other applications.
Immunogen	The antiserum was produced against synthesized peptide derived from human Caspase 6. AA range:130-179
Specificity	Cleaved-Caspase-6 p18 (D179) Polyclonal Antibody detects endogenous levels of fragment of activated Caspase-6 p18 protein resulting from cleavage adjacent to D179.
Formulation	Liquid in PBS containing 50% glycerol, 0.5% BSA and 0.02% sodium azide..
Storage	Store at -20°C. Avoid repeated freeze-thaw cycles.
Protein Name	Caspase6
Gene Name	CASP6
Cellular localization	Cytoplasm . Nucleus .
Purification	The antibody was affinity-purified from rabbit antiserum by affinity-chromatography using epitope-specific immunogen.
Clonality	Polyclonal

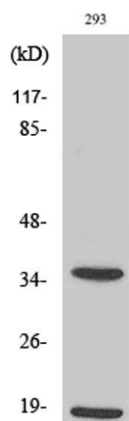
Concentration	1 mg/ml
Observed band	20+35kD
Human Gene ID	839
Human Swiss-Prot Number	P55212
Alternative Names	CASP6; MCH2; Caspase-6; CASP-6; Apoptotic protease Mch-2

Background

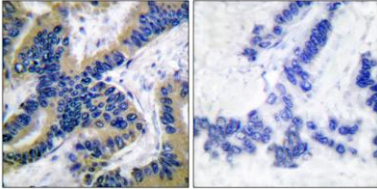
This gene encodes a member of the cysteine-aspartic acid protease (caspase) family of enzymes. Sequential activation of caspases plays a central role in the execution-phase of cell apoptosis. Caspases exist as inactive proenzymes which undergo proteolytic processing at conserved aspartic acid residues to produce two subunits, large and small, that dimerize to form the active enzyme. This protein is processed by caspases 7, 8 and 10, and is thought to function as a downstream enzyme in the caspase activation cascade. Alternative splicing of this gene results in multiple transcript variants that encode different isoforms. [provided by RefSeq, Oct 2015],



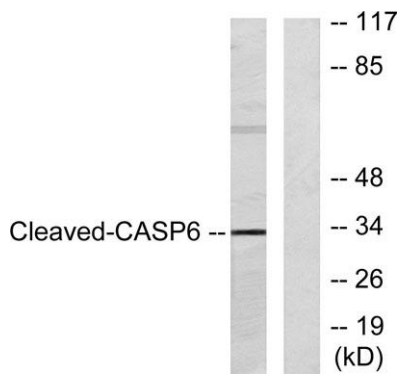
Western Blot analysis of various cells using Cleaved-Caspase-6 p18 (D179) Polyclonal Antibody diluted at 1:1000



Western Blot analysis of 293 cells using Cleaved-Caspase-6 p18 (D179) Polyclonal Antibody diluted at 1:1000



Immunohistochemistry analysis of paraffin-embedded human lung carcinoma tissue, using Caspase 6 (Cleaved-Asp162) Antibody. The picture on the right is blocked with the synthesized peptide.



Western blot analysis of lysates from 293 cells, treated with Etoposide 25uM 60', using Caspase 6 (Cleaved-Asp162) Antibody. The lane on the right is blocked with the synthesized peptide.