

**Cleaved-Caspase-6 p18 (D162) rabbit pAb****Cat#: orb763878 (Manual)**

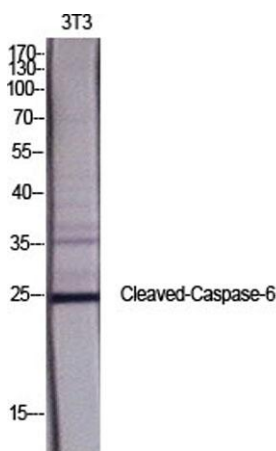
For research use only. Not intended for diagnostic use.

<b>Product Name</b>	Cleaved-Caspase-6 p18 (D162) rabbit pAb
<b>Host species</b>	Rabbit
<b>Applications</b>	WB;IHC;IF;ELISA
<b>Species Cross-Reactivity</b>	Mouse;Rat
<b>Recommended dilutions</b>	Western Blot: 1/500 - 1/2000. Immunohistochemistry: 1/100 - 1/300. ELISA: 1/10000. Not yet tested in other applications.
<b>Immunogen</b>	The antiserum was produced against synthesized peptide derived from mouse Caspase 6. AA range:144-193
<b>Specificity</b>	Cleaved-Caspase-6 p18 (D162) Polyclonal Antibody detects endogenous levels of fragment of activated Caspase-6 p18 protein resulting from cleavage adjacent to D162.
<b>Formulation</b>	Liquid in PBS containing 50% glycerol, 0.5% BSA and 0.02% sodium azide..
<b>Storage</b>	Store at -20°C. Avoid repeated freeze-thaw cycles.
<b>Protein Name</b>	Caspase6
<b>Gene Name</b>	CASP6
<b>Cellular localization</b>	
<b>Purification</b>	The antibody was affinity-purified from rabbit antiserum by affinity-chromatography using epitope-specific immunogen.
<b>Clonality</b>	Polyclonal

<b>Concentration</b>	1 mg/ml
<b>Observed band</b>	28+35kD
<b>Human Gene ID</b>	
<b>Human Swiss-Prot Number</b>	
<b>Alternative Names</b>	CASP6; MCH2; Caspase-6; CASP-6; Apoptotic protease Mch-2

## Background

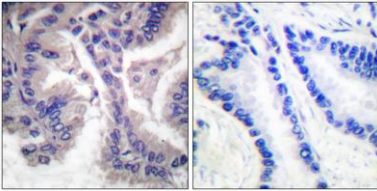
CASP6 encodes a member of the cysteine-aspartic acid protease (caspase) family of enzymes. Sequential activation of caspases plays a central role in the execution-phase of cell apoptosis. Caspases exist as inactive proenzymes which undergo proteolytic processing at conserved aspartic acid residues to produce two subunits, large and small, that dimerize to form the active enzyme. Caspase 6 is processed by caspases 7, 8 and 10, and is thought to function as a downstream enzyme in the caspase activation cascade. Alternative splicing of CASP6 results in multiple transcript variants that encode different isoforms.



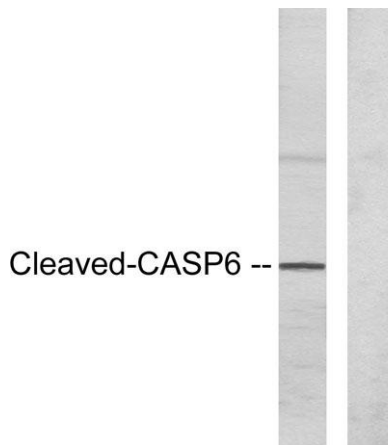
**Western Blot analysis of various cells using Cleaved-Caspase-6 p18 (D162) Polyclonal Antibody diluted at 1:1000**



**Western Blot analysis of HeLa cells using Cleaved-Caspase-6 p18 (D162) Polyclonal Antibody diluted at 1:1000**



**Immunohistochemistry analysis of paraffin-embedded human lung carcinoma tissue, using Caspase 6 (Cleaved-Asp162) Antibody. The picture on the right is blocked with the synthesized peptide.**



**Western blot analysis of lysates from HeLa cells, treated with Etoposide 25uM 60', using Caspase 6 (Cleaved-Asp162) Antibody. The lane on the right is blocked with the synthesized peptide.**