

## Rat MCP1 ELISA Kit

**Cat#: orb106599 (ELISA Manual)**

### Assay Principle

The Biorbyt Rat CCL2 Pre-Coated ELISA (Enzyme-Linked Immunosorbent Assay) kit is a solid phase immunoassay specially designed to measure Rat CCL2 with a 96-well strip plate that is pre-coated with antibody specific for CCL2. The detection antibody is a biotinylated antibody specific for CCL2. The capture antibody is monoclonal antibody from mouse, the detection antibody is polyclonal antibody from goat. The kit contains recombinant Rat CCL2 with immunogen: Expression system for standard: NSO; Immunogen sequence: Q24-N148. The kit is analytically validated with ready to use reagents. To measure Rat CCL2, add standards and samples to the wells, then add the biotinylated detection antibody. Wash the wells with PBS or TBS buffer, and add Avidin-Biotin-Peroxidase Complex (ABC-HRP). Wash away the unbound ABC-HRP with PBS or TBS buffer and add TMB. TMB is substrate to HRP and will be catalyzed to produce a blue color product, which changes into yellow after adding acidic stop solution. The density of the yellow product is linearly proportional to Rat CCL2 in the sample. Read the density of the yellow product in each well using a plate reader, and benchmark the sample wells' readings against the standard curve to determine the concentration of Rat CCL2 in the sample.

### Overview

**Product Name** Rat MCP-1 ELISA Kit

**Reactive Species** Rat

**Size** 96wells/kit, with removable strips.

**Description** Sandwich High Sensitivity ELISA kit for Quantitative Detection of Rat MCP-1/CCL2. 96wells/kit, with removable strips.

**Sensitivity** <10pg/ml

\*The sensitivity or the minimum detectable dose (MDD) is the lower limit of target protein that can be detected by the kit. It is determined by adding two standard deviations to the mean O.D. value of twenty (20) blank wells and calculating the corresponding concentration.

**Detection Range** 15.6pg/ml-1000pg/ml

**Storage Instructions** Store at 4°C for 6 months, at -20°C for 12 months. Avoid multiple freeze-thaw cycles (Shipped with wet ice.)

**Uniprot ID** P14844

### Technical Details

**Capture/Detection Antibodies** The capture antibody is monoclonal antibody from mouse, the detection antibody is polyclonal antibody from goat.

**Specificity** Natural and recombinant Rat CCL2

**Immunogen** Expression system for standard: NSO; Immunogen sequence: Q24-N148

**Cross Reactivity** There is no detectable cross-reactivity with other relevant proteins.

### Notice Before Application

Please read the following instructions before starting the experiment.

1. To inspect the validity of experiment operation and the appropriateness of sample dilution proportion, pilot experiment using standards and a small number of samples is recommended.
2. Before using the Kit, spin tubes and bring down all components to the bottom of tubes.
3. Don't let 96-well plate dry, for dry plate will inactivate active components on plate.
4. Don't reuse tips and tubes to avoid cross contamination.
5. Avoid using the reagents from different batches together.

### Kit Components/Materials Provided

Description	Quantity	Volume
Anti-Rat CCL2 Pre-coated 96-well strip microplate	1	12 strips of 8 wells
Rat CCL2 Standard	2	10ng/tube
Rat CCL2 Biotinylated antibody (100x)	1	130 µl
Avidin-Biotin-Peroxidase Complex (100x)	1	130 µl
Sample Diluent	1	30ml
Antibody Diluent	1	12ml
Avidin-Biotin-Peroxidase Diluent	1	12ml
Color Developing Reagent (TMB)	1	10ml
Stop Solution	1	10ml
Wash Buffer Powder	1	Pack
Plate Sealers	4	Piece

### Required Materials That Are Not Supplied

Microplate Reader capable of reading absorbance at 450nm.

Automated plate washer (optional)

Pipettes and pipette tips capable of precisely dispensing 0.5 µl through 1 ml volumes of aqueous solutions.

Multichannel pipettes are recommended for large amount of samples.

Deionized or distilled water.

500ml graduated cylinders.

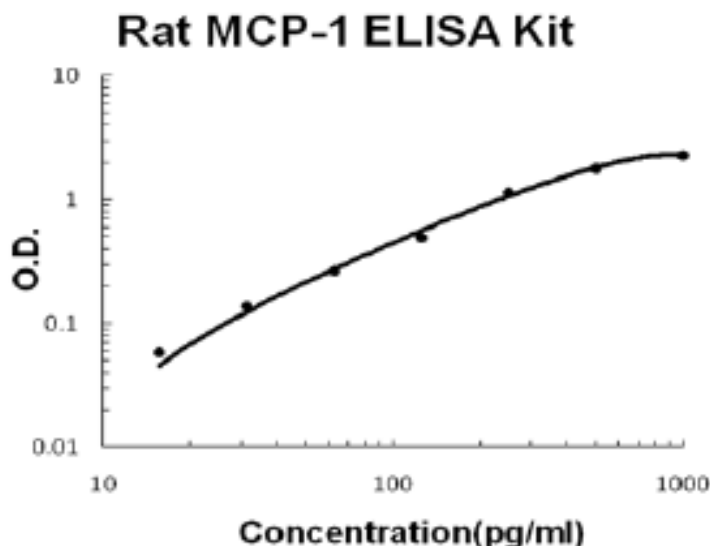
Test tubes for dilution.

### Rat MCP-1 ELISA Kit Standard Curve Example

Highest O.D. value might be higher or lower than in the example. The experiment result is statistically significant if the highest O.D. value is no less than 1.0.

Concentration 0 (pg/ml)	15.6	31.2	62.5	125	250	500	1000
O.D.	0.002	0.058	0.137	0.266	0.491	1.137	2.262

### Rat MCP-1/CCL2 ELISA Kit standard curve



A standard curve is provided for demonstration only. A standard curve should be generated for each set of samples assayed.

### Intra/Inter Assay Variability

Biorbyt spend great efforts in documenting lot to lot variability and make sure our assay kits produce robust data that are reproducible.

**Intra-Assay Precision (Precision within an assay):** Three samples of known concentration were tested on one plate to assess intra-assay precision.

**Inter-Assay Precision (Precision across assays):** Three samples of known concentration were tested in separate assays to assess inter-assay precision.

Sample	Intra-Assay Precision			Inter-Assay Precision		
	1	2	3	1	2	3
n	16	16	16	24	24	24
Mean(pg/ml)	41	257	473	40	251	504
Standard deviation	2.29	21.58	27.43	2.56	21.58	29.23
CV(%)	7.2%	7.2%	5.8%	6.4%	8.6%	5.8%

## Reproducibility

To assay reproducibility, three samples with differing target protein concentrations were assayed using four different lots.

Lots	Lot1 (pg/ml)	Lot2 (pg/ml)	Lot3 (pg/ml)	Lot4 (pg/ml)	Mean (pg/ml)	Standard Deviation	CV (%)
Sample 1	41	37	39	42	39	1.92	4.9%
Sample 2	257	231	216	228	233	14.94	6.4%
Sample 3	473	462	446	461	460	9.6	2%

\*number of samples for each test n=16.

## Preparation Before The Experiment

### All reagents

Bring all reagents to 37°C prior to use. The assay can also be done at room temperature however we recommend doing it at 37°C for best consistency with our QC results. Also the TMB incubation time estimate (15-25min) is based on 37°C.

### Wash buffer

Disolve the wash buffer powder in 1000ml of water to make 1X PBS wash buffer.

### Biotinylated Anti-Rat CCL2 antibody

It is recommended to prepare this reagent immediately prior to use by diluting the Rat CCL2 Biotinylated antibody (100x) 1:100 with Antibody Diluent. Prepare 100 µl by adding 1 µl of Biotinylated antibody (100x) to 99 µl of Antibody Diluent for each well. Mix gently and thoroughly and use within 2 hours of generation.

### Avidin-Biotin-Peroxidase Complex

It is recommended to prepare this reagent immediately prior to use by diluting the Avidin-Biotin- Peroxidase Complex (100x) 1:100 with Avidin-Biotin-Peroxidase Diluent. Prepare 100 µl by adding 1 µl of Avidin-Biotin-Peroxidase Complex (100x) to 99 µl of Avidin-Biotin-Peroxidase Diluent for each well. Mix gently and thoroughly and use within 2 hours of generation.

## Rat CCL2 Standard

It is recommended that the standards be prepared no more than 2 hours prior to performing the experiment. Use one 10ng of lyophilized Rat CCL2 standard for each experiment. Gently spin the vial prior to use. Reconstitute the standard to a stock concentration of 10ng/ml using 1ml of sample diluent. Allow the standard to sit for a minimum of 10 minutes with gentle agitation prior to making dilutions.

## Microplate

The included microplate is coated with capture antibodies and ready-to-use. It does not require additional washing or blocking. The unused well strips should be sealed and stored in the original packaging.

## Dilution of Rat CCL2 Standard

1. Number tubes 1-8. Final Concentrations to be Tube # 1 –1000pg/ml, #2 –500pg/ml, #3 – 250pg/ml, #4 – 125pg/ml, #5 – 62.5pg/ml, #6 – 31.25pg/ml, #7 – 15.625pg/ml, #8 – Sample Diluent serves as the zero standard (0pg/ml).
2. To generate standard #1, add 100µl of the reconstituted standard stock solution of 10ng/ml and 900µl of sample diluent to tube #1 for a final volume of 1000µl. Mix thoroughly.
3. Add 300 µl of sample diluent to tubes # 2-7.
4. To generate standard #2, add 300 µl of standard #1 from tube #1 to tube #2 for a final volume of 600 µl. Mix thoroughly.
5. To generate standard #3, add 300 µl of standard #2 from tube #2 to tube #3 for a final volume of 600 µl. Mix thoroughly.
6. Continue the serial dilution for tube #4-7.

## Sample Preparation and Storage

These sample collection instructions and storage conditions are intended as a general guideline and the sample stability has not been evaluated.

Sample Type	Procedure
Cell culture supernatants	Clear sample of particulates by centrifugation, assay immediately or store samples at -20°C.
Serum	Use a serum separator tube (SST) and allow serum to clot at room temperature for about four hours. Then, centrifuge for 15 min at approximately 1,000 x g. assay immediately or store samples at -20°C.

## Sample Dilution

The target protein concentration should be estimated and appropriate sample dilutions should be selected such that the final protein concentration lies near the middle of the linear dynamic range of the assay.

It is recommended to prepare 150 µl of sample for each replicate to be assayed. The samples should be diluted with sample diluent and mixed gently.



## Assay protocol

It is recommended that all reagents and materials be equilibrated to 37°C/room temperature prior to the experiment (see Preparation Before The Experiment if you have missed this information).

1. Prepare all reagents and working standards as directed previously.
2. Remove excess microplate strips from the plate frame and seal and store them in the original packaging.
3. Add 100 µl of the standard, samples, or control per well. Add 100 µl of the sample diluent buffer into the zero well. At least two replicates of each standard, sample, or control is recommended.
4. Cover with the plate sealer provided and incubate for 120 minutes at RT (or 90 min. at 37 °C).
5. Remove the cover and discard the liquid in the wells into an appropriate waste receptacle. Invert the plate on the benchtop onto a paper towel and tap the plate to gently blot any remaining liquid. It is recommended that the wells are not allowed to completely dry at any time.
6. Add 100 µl of the prepared 1x Biotinylated Anti-Rat CCL2 antibody to each well.
7. Cover with plate sealer and incubate for 90 minutes at RT (or 60 minutes at 37°C).
8. Wash the plate 3 times with the 1x wash buffer.
  - a. Discard the liquid in the wells into an appropriate waste receptacle. Then, invert the plate on the benchtop onto a paper towel and tap the plate to gently blot any remaining liquid. It is recommended that the wells are not allowed to completely dry at any time.
  - b. Add 300 µl of the 1x wash buffer to each assay well. (For cleaner background incubate for 60 seconds between each wash).
  - c. Repeat steps a-b 2 additional times.
9. Add 100 µl of the prepared 1x Avidin-Biotin-Peroxidase Complex into each well. Cover with the plate sealer provided and incubate for 40 minutes at RT (or 30 minutes at 37°C).
10. Wash the plate 5 times with the 1x wash buffer.
  - a. Discard the liquid in the wells into an appropriate waste receptacle. Then, invert the plate on the benchtop onto a paper towel and tap the plate to gently blot any remaining liquid. It is recommended that the wells are not allowed to completely dry at any time.
  - b. Add 300 µl of the 1x wash buffer to each assay well. (For cleaner background incubate for 60 seconds between each wash).
  - c. Repeat steps a-b 4 additional times.
11. Add 90 µl of Color Developing Reagent to each well. Cover with the plate sealer provided and incubate in the dark for 30 minutes at RT (or 15-25 minutes at 37°C). (The optimal incubation time must be empirically determined. A guideline to look for is blue shading the top four standard wells, while the remaining standards remain clear.)
12. Add 100 µl of Stop Solution to each well. The color should immediately change to yellow.
13. Within 30 minutes of stopping the reaction, the O.D. absorbance should be read with a microplate reader at 450nm.

## Data Analysis

Average the duplicate readings for each standard, sample, and control. Subtract the average zero standard O.D. reading. It is recommended that a standard curve be created using computer software to generate a four parameter logistic (4-PL) curve-fit. Alternatively, plot the mean absorbance for each standard against the concentration. The measured concentration in the sample can be interpolated by using linear regression of each

average relative OD against the standard curve generated using curve fitting software. This will generate an adequate but less precise fit of the data. For diluted samples, the concentration reading from the standard curve must be multiplied by the dilution factor.

## Background on CCL2

Monocyte chemoattractant protein-1(MCP-1), a member of the chemokine (chemotactic cytokine) family, is a potent monocyte agonist that is upregulated by oxidized lipids.<sup>1</sup> MCP-1 is also known as CCL2, SCYA2, MCAF. MCAF is a member of family of factors involved in immune and inflammatory responses. The amino acid sequence deduced from the nucleotide sequence reveals the primary structure of the MCAF precursor to be composed of a putative signal peptide sequence of 23 amino acid residues and a mature MCAF sequence of 76 amino acid residues.<sup>2</sup> MCP-1 plays a unique and crucial role in the initiation of atherosclerosis and may provide a new therapeutic target in this disorder.<sup>3</sup>

### Biorbyt Ltd.

5 Orwell Furlong, Cowley Road, Cambridge, Cambridgeshire  
CB4 0WY, United Kingdom  
Email: info@biorbyt.com | Phone: +44 (0)1223 859 353 | Fax: +44(0)1223 280 240

### Biorbyt LLC

Suite 103, 369 Pine Street, San Francisco  
California 94104, United States  
Email: info@biorbyt.com | Phone: +1 (415)-906-5211 | Fax: +1 (415) 651 8558